

# TECHNICAL BULLETIN TB182

## TILING INSTALLATION ON UNIVERSAL SHOWER BASE TRAYS

TB182.003  
© Ardex  
Australia  
2008 - 2014

**Date: Thursday, 10 July 2014**

### INTRODUCTION & SCOPE

This Technical Bulletin has been prepared to provide guidelines for the installation of tiles to pre-fabricated UNIVERSAL shower trays marketed and distributed by Universal Shower Base Pty Ltd

### CONDITIONS

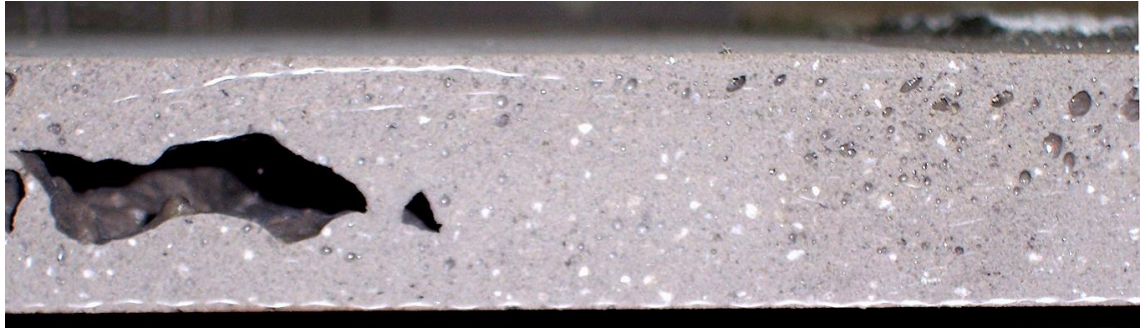
- The installation must conform to the requirements of AS 3958:2007
- The installation must be carried out by qualified tradespersons.
- All products recommended in the system shall be used in strict accordance with the manufacturers' instructions and are within the shelf life outlined on the packaging.
- All products recommended in the system to be used must be supplied to the site in unopened sealed containers and shall be stored in accordance with manufacturer's instructions.
- Testing was carried out on the basis that the deflection of the Universal shower base when installed does not exceed recommended  $1/360$  of span.
- Ardex warrants satisfactory adhesion of the tiles to the Universal shower base installed strictly as per guidelines provided in this document.
- The Universal shower base shall be located and installed strictly as per manufacturer's instructions.

### TYPES OF BASE

Ardex examined two configurations of Universal Shower Base in 2013 and this bulletin covers the following two types.



Polymer-cement-fibreglass reinforced faces with a foamed urethane foam core



Polymer – cement combination with fibre-glass mesh reinforcement

#### SURFACE PREPARATION

The Universal shower base surface must be clean and free from all dirt, grease, oil and other surface contaminants.

The Universal shower base must be located and securely fixed to substrate in accordance with the recommended instructions provided by the manufacturer and free from excessive deflection (i.e. greater than 1/360<sup>th</sup> of the span in any direction).

Sanding is not strictly required for fresh and clean surfaces of the base, however where there is contamination then all surfaces of the base to be tiled, can be sanded using 40 grit sand paper to roughen the surface and thoroughly cleaned free from dust using a damp sponge.

#### TILE APPLICATION

- 1) Prime the surfaces with one coat of any of the following;
  - Ardex WPM 300 mixed to the ratio of 1:1 Parts A to B
  - Ardex WPM368
  - Ardex P9 primerusing a brush or a roller to get a full coverage.
- 2) Fix tiles to Universal™ shower base using:
  - Ardex Optima
  - Ardex X77 + Ardex E90
  - Ardex STS8 + Ardex E90
  - Ardex Abaflex
  - Ardex X56
  - Ardex X52

tile adhesive using a 10x10x10mm notch trowel.

Apply the tile adhesive over **WPM 300**, whilst the primer is wet or tacky.

Check for 100% adhesive coverage on the back of the tile.

#### MEMBRANE APPLICATION

Where a waterproof membrane is required, Ardex WPM001, Ardex WPM155 or Ardex WPM002 are suitable for use with these shower bases. Priming shall be done with any of the primers listed above, or Ardex WPM270 (may not be suitable for all applications as it is a solvent based material).

Careful attention must be paid to correctly detailing the shower tray – wall junctions.

### **GROUT APPLICATION**

Suitable cement based grouts would be Ardex FG 8 or Ardex FSDD, either mixed with the flexible additive Ardex Grout Booster diluted 80% booster with 20% water by volume.

Suitable sealants depending on the tile type would be Ardex SE, Ardex ST silicones or Ardex CA20P urethane-silane.

#### **IMPORTANT**

This Technical Bulletin provides guideline information only and is not intended to be interpreted as a general specification for the application/installation of the products described. Since each project potentially differs in exposure/condition specific recommendations may vary from the information contained herein. For recommendations for specific applications/installations contact your nearest Ardex Australia Office.

#### **DISCLAIMER**

The information presented in this Technical Bulletin is to the best of our knowledge true and accurate. No warranty is implied or given as to its completeness or accuracy in describing the performance or suitability of a product for a particular application. Users are asked to check that the literature in their possession is the latest issue.

#### **REASON FOR REVISION**

Retesting was performed in October 2013

#### **REVIEW DATE**

October 2015

General Use in Australia

**NSW** 02 9851 9100, **QLD** 07 3817 6000, **VIC** 03 8339 3100, **SA/NT** 08 8406 2500, **WA** 08 9256 8600

**New Zealand** (Christchurch) 643 384 3029

Web: <http://www.ardex.com> email: [technicalservices@ardexaustralia.com](mailto:technicalservices@ardexaustralia.com)

