



SYSTEM ARDEX
PREMIUM PERFORMANCE

**WATERPROOFING, SUBSTRATE PREPARATION
AND GENERAL CONSTRUCTION SYSTEMS**

WATERPROOFING AND GENERAL CONSTRUCTION

CONTENTS

■ ARDEX INTRODUCTION

ARDEX Group	4
ARDEX Vision	5
ARDEX Innovation	6
ARDEX Support	7
SystemARDEX	7
ARDEX and Our Environment	8
ARDEX Australia – Committed to the Local Market	8
ARDEX Digital Services	9
Relevant Standards	10
Warranty And Quality Assurance	10
Technical Support Information	11
Ongoing Professional Development	12

■ PRODUCT INFORMATION

Table of Properties – Liquids	14
Table of Properties – Sheets	16

■ LIQUID APPLIED MEMBRANES

Acrylic, Polyurethane and SBR Membranes	19
Epoxy Membranes, Sealers and Adhesives	23
Primers and Reinforcement Materials	24

■ ARDEX SHEET MEMBRANES

Butynol® and TPO	28
Cover Boards and Insulation	31
Torch-On Membranes	32
Undertile Sheet Membranes	35
Weldable and Self-Adhesive Membranes	36
Hydrophilic Rubber Joints	38
Drainage Systems	39
Geotextile Fabric	40
Butynol® Accessories	41
TPO & Bitumen Accessories	42
Undertile Butynol® Accessories	43

■ GENERAL CONSTRUCTION

Fairing Coats and Repair Mortars	45
Repair Mortars	46
Anodes and Construction Grout	48
Renders	49
Renders and Primer Additive	50
Joint Sealants	51
Crack Repair and Injection	52
Concrete Crack Lock	56
Crack Repair and Injection Accessories	57

■ DISCLAIMER

Disclaimer	58
------------	----

This catalogue is designed for quick reference.
Please refer to product datasheets and packaging
for detailed instructions.



ARDEX GROUP

For nearly 70 years, ARDEX has been the quality leader for an entire industry, offering excellent building chemicals with supreme processing reliability – the brand of choice for installers and wholesalers.

Strong internal growth and intelligent acquisitions in foreign markets today puts the ARDEX Group on the map with 49 subsidiaries and 2,700 employees in over 50 countries on all continents, with one unique theme around the world; ARDEX ensures our valued customers receive the same high quality products and services.



ARDEX VISION

It is the vision of the ARDEX Group to be one of the world's leading solution providers of high-performance specialty building materials.



PERFORMANCE

- ARDEX is a system solution provider of high-performance specialty building materials.
- In close cooperation with our partners, we commit ourselves to gold standard business practices to ensure mutual success and profitable growth.
- We will be the premium supplier in each of our selected segments.
- We strive for market leadership in defined markets worldwide.



FAMILY-OWNED BUSINESS

- As a family-owned company, we encourage the development of team spirit and identification with the culture of the business.
- Building on the platform for growth established over many years, we look forward with confidence to a successful future.
- We are proud of our history.



CORPORATE CULTURE

- The guiding principle of ARDEX is "excellence in all that we do".
- ARDEX believes that all employees and partners should operate within a spirit of fairness, transparency and responsible business practices at all times.
- Employees are the foundation on which we build our business.
- Sustainable, long-term growth objectives underpin all of our various activities.



ARDEX INNOVATION

A world of experience... providing engineered solutions for waterproofing and general construction projects.

ARDEX Australia is part of the ARDEX Group, a company founded in Germany in the 1940's, that has grown to become a global business, providing engineered solutions for flooring, waterproofing and tiling applications.

Our waterproofing and general construction solutions are highly application specific. From sub-floor to roofing, we have developed products that stand the test of time – and moisture. Non-failure in these areas, even under extreme conditions, is critical which is why so many professionals rely on ARDEX.

Innovation has been a key influencer to this continued success, with technologies introduced many years ago still unique in their respective industries today. Being part of the Global ARDEX Group, ARDEX Australia has access to a huge research and development resource which is continually developing world unique products and technologies.



ARDEX SUPPORT

ARDEX products are backed by a team of Technical Support Specialists and Sales Professionals dedicated to one goal – eliminating guesswork, improving onsite efficiencies and taking risk out of waterproofing installations.

ARDEX supports building professionals to complete successful projects by having:

- The largest field team of trained professionals
- Project specific installation recommendations
- Job start-up and walk through support
- Local and national training
- Contractor recommendation
- Extensive digital resources

SYSTEMARDEX

ARDEX is committed to developing products that are easy to use and offer high performance. ARDEX products, systems and services are designed to ensure professional contractors the competitive advantage of a lower total cost of installation through superior performance.

ARDEX waterproofing and general construction products are designed to work together for total reliability and performance. Each product is the careful result of research and development combining the input of contractors, specifiers and installers to ensure absolute product compatibility.

A system of high quality, totally compatible products matched to unparalleled technical and field support.

We call this SystemARDEX.



ARDEX AND OUR ENVIRONMENT

As part of our ongoing commitment to the environment ARDEX is constantly improving our existing range and developing new products to reduce our ecological footprint.

The indoor air quality of buildings is also enhanced by using ARDEX products. The performance leading and most commonly used ARDEX waterproofing and general construction products have been independently tested to the Green Building Council Green Star Specification for Office Design (IEQ-11) and Office Interior (IEQ-13). ARDEX products that meet the benchmark for VOC credit in the Green Building Council of Australia's Rating Tools are marked with the following icon within this product catalogue.

LOW VOC 

ARDEX AUSTRALIA – COMMITTED TO THE LOCAL MARKET

- Localised Research and Development – Formulations designed in Australia for Australian conditions
- Five local manufacturing sites – Products made close to market
- Seven distribution centres – Products available when you need them
- Local Technical Team – Support and backup wherever you are
- Customer service and sales support in every state



ARDEX DIGITAL SERVICES



Website:

All the information you need in one place.

ardexaustralia.com



Twitter:

Product news & updates.

twitter.com/ardexaustralia



YouTube:

Access an extensive video library with helpful how-to videos.

youtube.com/ardexaustralia



Instagram:

Images of ARDEX related projects around Australia.

instagram.com/ardexaustralia



Facebook:

- Introduction of new products
- Access to video library
- And much more...

facebook.com/ArdexAU



LinkedIn:

Industry news & updates from our team of experts.

Search for us under
ARDEX Australia Pty Ltd



Bookmarc:

An online architectural project library.

Google "ARDEX Bookmarc"

Apple & Android Apps:

The ARDEX app is a slimmed down version of the website and hosts a variety of helpful features in the palm of your hand.



Google Play Store
(search for
"ARDEX Australia")



App Store
(search for
"ARDEX Australia")



RELEVANT STANDARDS

- AS 3740 – 2010 Waterproofing of wet areas within residential buildings
- AS 4858 – 2004 Wet Area Membranes
- AS 4654.2 – 2012 Waterproofing membrane systems for exterior use:
 - Above Ground Level – Materials
 - Above Ground Level – Design and Installation

WARRANTY AND QUALITY ASSURANCE



ARDEX products are generally warranted for 10–20 years when installed to relevant Australian Standards and applicable ARDEX specifications, technical data sheet and instruction for application and use.

The ARDEX Australia Guarantee or Warranty covers the:

- **repair or replacement of the product PLUS;**
- **the costs of re-installation of the product PLUS;**
- **the costs of replacement of any immediate covering such as tiles or carpet.**

Product Warranty

A product warranty is applicable on all ARDEX products for a period of between 10–20 years depending on the product. ARDEX warrant that their manufactured product is free from defects as well as being suitable for the purpose for which it is intended, that is as long as it has been applied in accordance with the ARDEX published literature.

SystemARDEX Warranty

The SystemARDEX Warranty is project specific and warrants that the SystemARDEX combination of products that forms the total system are free from defects, are 100% compatible and the system combination is suitable for the purpose intended. The SystemARDEX Warranty is designed for applications involving multiple ARDEX products that form a system for a particular purpose. For example, floor surface preparation prior to laying vinyl may include up to five different ARDEX products and the total SystemARDEX combination would be warranted as being free from defects, totally compatible and suitable for a particular project application.

Extended Warranty

For an extended warranty or one that includes an installation of non-standard product combinations (e.g. product combinations that are not detailed in our published data sheets) you need to contact the ARDEX Technical Services Department on 1800 224 070 prior to the installation for our best recommendations.

TECHNICAL SUPPORT INFORMATION



ARDEX is committed to being the leading provider of technical support in the field. We believe our responsibility does not end with the manufacture of innovative, technically superior products. Therefore, our team of technical advisers works with contractors and specifiers, as well as with the ARDEX R&D team to provide solutions for specific applications. Some of these common solutions are published in ARDEX Technical Bulletins which are on the ARDEX Australia website.

Some examples include:

- Waterproofing of internal water resistant particleboards and plywood
- Waterproofing potable water containment tanks
- Façade restoration

Contact our Technical Services department for help with anything out of the ordinary, if we don't already have the answer we will certainly investigate.

Technical Services Toll Free

1800 224 070 (Australia)

0800 227 339 (NZ)

Technical Data is available on the ARDEX

Website www.ardexaustralia.com

and the [ARDEX Australia mobile app](#).

ONGOING PROFESSIONAL DEVELOPMENT

The vision for the ARDEX Academy is:

“TO BE RECOGNISED AS THE LEADING TRAINING BRAND WITHIN THE BUILDING MATERIAL INDUSTRY”



Our industry, like any other, requires on-going training to keep up with the changes in legislation/standards and materials. ARDEX offers training for both the applicator as well as retail staff.

For applicators committed to providing a high level of workmanship, ARDEX can help you stay up to date, and increase both your professionalism and productivity. Our training courses cover:

- Application fundamentals and the relevant Australian Standards e.g. Under Tile Waterproofing, Substrate Preparation, TPO, Butynol, Crack Repair, Remedial
- Useful tips – simplifying the installation process
- New materials/trends and their implication
- Getting the most out of new product technologies

Visit www.ardexaustralia.com to see what courses are available and register.

For distributor/showroom staff our training modules focus on up-skilling staff so they can confidently recommend the right product for the job. These can be tailored to the knowledge level of your staff, and delivered at a time and location convenient to you.



**WATERPROOFING, SUBSTRATE PREPARATION AND
GENERAL CONSTRUCTION SYSTEMS**

PRODUCT INFORMATION

LIQUID MEMBRANES

Product		Kit size	Use description	No. of parts	No. of coats	W.F.T. per coat (mm)	D.F.T. per coat (mm)	Total coverage/Kit (m ²)	Recoat time minimum	Recoat time maximum	Full cure time	Thinning and cleaning up
New name	Old name											
ARDEX WPM001	Superflex Premixed Bathroom and Balcony	15L	Under tile waterproof membrane for walls	1	2	0.5	0.25	15	2 hrs	indef.	3 days	water
ARDEX WPM002	Superflex Two Part Bathroom and Balcony	20L+	Under tile waterproof membrane for floors	2	2	0.6	0.40	24	2 hrs	indef.	3 days	water
		20kg	Under tile waterproof membrane for floors			0.9	0.60	16				
ARDEX WPM155 Rapid		15L	Under tile waterproof membrane for walls Under tile waterproof membrane for floors	1	2	0.5	0.25	17.2	2 hrs	indef.	3 days	water
ARDEX WPM157		20kg	Moisture cured polyurethane membrane for retaining walls and planters	1	1-2	1.0	1.0	13	3 hr	16 hrs	1 day	xylene
ARDEX WPM179		15L	Single Component Rubber Waterproofing Membrane	1	2	1.0	1.0	8	2-4 hrs	n/a	24-48 hrs	water
ARDEX WPM265	Sheltercoat Primer Water Based	20L	Water based primer for ARDEX under tile membranes	1	1	n/a	n/a	120	1 hr	8 hrs	4 hrs	water
ARDEX WPM270	Sheltercoat Primer Solvent Based	20L	Solvent based primer for under tile membranes	1	1	n/a	n/a	120	30 mins	8 hrs	4 hrs	xylene
ARDEX WPM300	HydEpoxy 300	4L	Efflorescent barrier	2	1	0.3	0.15	12	4 hrs	48 hrs	7 days	water
		20L						60				
ARDEX WPM300	HydEpoxy 300	4L	Two component water based epoxy moisture barrier	2	2	0.3	0.15	6	4 hrs	48 hrs	7 days	water
		20L						30				
ARDEX WPM368		20kg	Single Component copolymer moisture barrier	1	2	0.3	n/a	60	2-4 hrs	5 days	7 days	water

LIQUID MEMBRANES SEALERS, ADHESIVES AND ADDITIVES

Product		Kit size	Use description	No. of parts	No. of coats	W.F.T. per coat (mm)	D.F.T. per coat (mm)	Total coverage/Kit (m ²)	Recoat time minimum	Recoat time maximum	Full Cure time	Thinning and cleaning up
New name	Old name											
ARDEX WPM310	Shelterguard	15L	Semi permeable roof facade membrane	1	2	0.3	0.15	24	4 hrs	2-3 days	7 days	water
			Low permeability roof membrane									
ARDEX WPM330	Facade Membrane	15L	Facade membrane	1	2	0.35	0.175	20	2 hrs	2-3 days	24 hrs	water
ARDEX WPM405	Sheltercrete Additive	20L	Slurry coat	1	1	2.0	n/a	100		Before Surface Drying	24 hrs	water
			Screed or render		1	2 to 30	n/a	1.3/mm	16 hrs	n/a	24 hrs	
			Temp. waterproofing		2	1.0	n/a	24	16 hrs	21 days	24 hrs	
ARDEX WPM908		15L	Light foot trafficable membrane	1	3	0.40	0.20	12.5	4 hrs	2-3 days	4 days	water

SHEET MEMBRANES						
Product						
New name	Old name	Type	Reinforcement type	Reinforcement Weight (gsm)	Rolls per pallet	Roll length (m)
BUTYNOL® ROOFING						
ARDEX BUTYNOL® 1.0	Butynol® Standard	Butyl rubber	n/a	n/a	n/a	17.86
ARDEX BUTYNOL® 1.5	Butynol® Medium					
TPO ROOFING						
ARDEX WPM 612		Thermoplastic polyolefin	Polyester	n/a	n/a	30.5
ARDEX WPM 612 FL		Thermoplastic polyolefin	Polyester	n/a	n/a	30.5
ARDEX WPM 615		Thermoplastic polyolefin	Polyester	n/a	n/a	30.5
BASE SHEETS						
ARDEX WPM 114		APP with SBS Strips	Polyester/Glass	180	23	10
ARDEX WPM 116	F/B Base Sheet	APP	Non-woven Polyester	120	28	10
TORCH-ON MEMBRANES						
ARDEX WPM 150	3/160 Membrane	APP	Combined polyester/glass	150	28	10
ARDEX WPM 185	Mineral Membrane	APP		180	20	10
ARDEX WPM 188		SBS		180	28	10
ARDEX WPM 444		APP	Polyester	180	23	10
				Normal edge lap (mm)	Nominal thickness/weight per m²	Surface finish (top/bottom)
				50	1.0mm	Black
					1.5mm	Black or Grey
				75–150	1.14mm	Grey
				75–150	1.14mm	Grey
				75–150	1.5mm	White/Grey
Sanded Polymer/Thermo-Adhesive Strips						
				100–150	4.0mm	
				50	2.7mm	Torch Film/Fleece
Sand/Torch Film						
				75	3.0mm	
				75	4.0mm	Grey, Slate/Torch Film
				75	3.0mm	Torch Film/Torch Film
				100	4.1mm	Sand or Talc/Polythene Film

SHEET MEMBRANES (cont'd)						
SELF-ADHESIVE SBS SHEETS						
ARDEX WPM 117		SBS	Fibreglass	n/a	25	15
ARDEX WPM 3000X	Shelterseal 3000	SBS	n/a	n/a	25	20
UNDERTILE MEMBRANES						
ARDEX WPM 750		Synthetic rubber	n/a	n/a	n/a	20
ARDEX WPM 1000		Synthetic rubber	n/a	n/a	n/a	20
WELDABLE MEMBRANES						
ARDEX Root Repell		Synthetic rubber	n/a	n/a	n/a	20
ARDEX WPM 1500		Fleeced-lined	n/a	n/a	n/a	20
					40	1.4
					60	1.5
					100	2.0
					150	2.0
					200	2.0
					300	2.0
					400	2.0
					500	2.0
					600	2.0
					700	2.0
					800	2.0
					900	2.0
					1000	2.0
					1100	2.0
					1200	2.0
					1300	2.0
					1400	2.0
					1500	2.0
					1600	2.0
					1700	2.0
					1800	2.0
					1900	2.0
					2000	2.0
					2100	2.0
					2200	2.0
					2300	2.0
					2400	2.0
					2500	2.0
					2600	2.0
					2700	2.0
					2800	2.0
					2900	2.0
					3000	2.0
					3100	2.0
					3200	2.0
					3300	2.0
					3400	2.0
					3500	2.0
					3600	2.0
					3700	2.0
					3800	2.0
					3900	2.0
					4000	2.0
					4100	2.0
					4200	2.0
					4300	2.0
					4400	2.0
					4500	2.0
					4600	2.0
					4700	2.0
					4800	2.0
					4900	2.0
					5000	2.0
					5100	2.0
					5200	2.0
					5300	2.0
					5400	2.0
					5500	2.0
					5600	2.0
					5700	2.0
					5800	2.0
					5900	2.0
					6000	2.0
					6100	2.0
					6200	2.0
					6300	2.0
					6400	2.0
					6500	2.0
					6600	2.0
					6700	2.0
					6800	2.0
					6900	2.0
					7000	2.0
					7100	2.0
					7200	2.0
					7300	2.0
					7400	2.0
					7500	2.0
					7600	2.0
					7700	2.0
					7800	2.0
					7900	2.0
					8000	2.0
					8100	2.0
					8200	2.0
					8300	2.0
					8400	2.0
					8500	2.0
					8600	2.0
					8700	2.0
					8800	2.0
					8900	2.0
					9000	2.0
					9100	2.0
					9200	2.0
					9300	2.0
					9400	2.0
					9500	2.0
					9600	2.0
					9700	2.0
					9800	2.0
					9900	2.0
					10000	2.0
					10100	2.0
					10200	2.0
					10300	2.0
					10400	2.0
					10500	2.0
					10600	2.0
					10700	2.0
					10800	2.0
					10900	2.0
					11000	2.0
					11100	2.0
					11200	2.0
					11300	2.0
					11400	2.0
					11500	2.0
					11600	2.0
					11700	2.0
					11800	2.0
					11900	2.0
					12000	2.0
					12100	2.0
					12200	2.0
					12300	2.0
					12400	2.0
					12500	2.0
					12600	2.0
					12700	2.0
					12800	2.0
					12900	2.0
					13000	2.0
					13100	2.0
					13200	2.0
					13300	2.0
					13400	2.0
					13500	2.0
					13600	2.0
					13700	2.0
					13800	2.0
					13900	2.0
					14000	2.0
					14100	2.0
					14200	2.0
					14300	2.0
					14400	2.0
					14500	2.0
					14600	2.0
					14700	2.0
					14800	2.0
					14900	2.0
					15000	2.0
					15100	2.0
					15200	2.0
					15300	2.0
					15400	2.0
					15500	2.0
					15600	2.0
					15700	2.0
					15800	2.0
					15900	2.0
					16000	2.0
					16100	2.0
					16200	2.0
					16300	2.0
					16400	2.0
					16500	2.0
					16600	2.0
					16700	2.0
					16800	2.0
					16900	2.0
					17000	2.0
					17100	2.0
					17200	2.0
					17300	2.0
					17400	2.0
					17500	2.0
					17600	2.0
					17700	2.0
					17800	2.0
					17900	2.0
					18000	2.0
					18100	2.0
					18200	2.0
					18300	2.0
					18400	2.0
					18500	2.0
					18600	2.0
					18700	2.0
					18800	2.0
					18900	2.0
					19000	2.0
					19100	2.0
					19200	2.0
					19300	2.0
					19400	2.0
					19500	2.0
					19600	2.0
					19700	2.0
					19800	2.0
					19900	2.0
					20000	2.0
					20100	2.0
					20200	2.0
					20300	2.0
					20400	2.0
					20500	2.0
					20600	2.0
					20700	2.0
					20800	2.0
					20900	2.0
					21000	2.0
					21100	2.0
					21200	2.0
					21300	2.0
					21400	2.0
					21500	2.0
					21600	2.0
					21700	2.0
					21800	2.0
					21900	2.0
					22000	2.0
					22100	2.0
					22200	2.0
					22300	2.0
					22400	2.0
					22500	2.0
					22600	2.0
					22700	2.0
					22800	2.0
					22900	2.0
					23000	2.0
					23100	2.0
					23200	2.0
					23300	2.0
					23400	2.0
					23500	2.0
					23600	2.0
					23700	2.0
					23800	2.0
					23900	2.0
					24000	2.0
					24100	2.0
					24200	2.0
					24300	2.0
					24400	2.0
					24500	2.0
					24600	2.0
					24700	2.0
					24800	2.0
					24900	2.0
					25000	2.0
					25100	2.0
					25200	2.0
					25300	2.0
					25400	2.0
					25500	2.0
					25600	2.0
					25700	2.0
					25800	2.0
					25900	2.0
					26000	2.0
					26100	2.0
					26200	2.0
					26300	2.0
					26400	2.0
					26500	2.0
					26600	2.0
					26700	2.0
					26800	2.0
					26900	2.0
					27000	2.0
					27100	2.0
					27200	2.0
					27300	2.0
					27400	2.0
					27500	2.0
					27600	2.0
					27700	2.0
					27800	2.0
					27900	2.0
					28000	2.0
					28100	2.0
					28200	2.0
					28300	2.0
					28400	2.0
					28500	



ACRYLIC, POLYURETHANE, EPOXY AND SBR MEMBRANES

LIQUID APPLIED MEMBRANES

TWO COMPONENT UNDERTILE WATERPROOFING MEMBRANE



ARDEX WPM 002
(Superflex Bathroom and Balcony Two Part)
LOW VOC ★

- ARDEX WPM 002 is a tough, rapid drying two component waterproofing membrane specifically designed for use under tiles.
- Rapid drying time – can be tiled over in 16–24 hrs
 - Fibre reinforced – no need for reinforcing mat
 - BRANZ Appraisal #701 for undertile waterproofing
 - Low VOC – meets Green Building Council of Australia Green Star IEQ-13 requirements

TYPICAL APPLICATIONS
Internal and external wet areas, balconies, decks, and other areas that will be tiled or otherwise protected by regular foot traffic. Suitable for permanent immersion (when tiled over).

SUBSTRATES
Concrete, renders and screeds, fibre cement*, plasterboard*, plywood*
*Not recommended for external applications.

COVERAGE
■ Floors: 16m² (2 coats) D.F.T. – 1.2mm
■ Walls: 24m² (2 coats) D.F.T. – 0.8mm

COLOURS
■ Liquid: Light Grey/Green
■ Powder: Off White

DRYING TIMES
■ Recoat time: 1–2 hrs
■ Ready to tile: 16–24 hrs
■ Full cure: 3 days

VOC CONTENT
25g/L

PACKAGING	CODE
20kg pail/20kg bag	8000082

MODIFIED POLYURETHANE WATERPROOFING MEMBRANE



ARDEX WPM 155 RAPID LOW VOC

ARDEX WPM 155 Rapid is a water based polyurethane-acrylic waterproofing membrane developed for high performance under-tile waterproofing.

- Fast drying Polyurethane acrylic membrane
- Excellent film build – easy to gauge thickness
- Class III membrane – in accordance with AS4858 requirements
- Low VOC – meets Green Building Council of Australia Green Star IEQ-13 requirements

TYPICAL APPLICATIONS

Internal and external wet areas, balconies, decks, and other areas that will be tiled or otherwise protected by regular foot traffic.

SUBSTRATES

Concrete, renders and screeds, fibre cement*, plasterboard*, plywood*.

*Not recommended for external applications.

COVERAGE

- Walls: 17.2m² (2 coats) D.F.T. – 0.5mm
- Floors: 17.2m² (2 coats) with ARDEX STB Tape – D.F.T. – 0.5mm
- Floors: 8.6m² (2 coats) D.F.T. – 1.0mm

COLOURS

Grey

DRYING TIMES

- Recoat time: 1–2 hours
- Ready to tile: 4–6 hours
- Full cure: 3 days

VOC CONTENT

42g/L

PACKAGING

4L (5.3kg)
15L (20kg) pails

CODE

19728
19727

ONE PART MOISTURE CURED POLYURETHANE MEMBRANE



ARDEX WPM 157 LOW VOC

ARDEX WPM 157 is a one component moisture cured polyurethane system for waterproofing planter box internals, roof and deck areas (that are to be paved or covered) and landscaped decks.

- Excellent flexibility – accommodates building movement
- Single component – ready to use, no mixing required
- Excellent chemical resistance
- Low VOC – meets Green Building Council of Australia Green Star IEQ-13 requirements

TYPICAL APPLICATIONS

Planter box internals, landscaped decks, roof and deck areas (that are to be paved or covered).

SUBSTRATES

Concrete, renders and screeds, and fibre cement.

COVERAGE

Approx. 13m² (1–2 coat) D.F.T. – 1.0mm

COLOURS

Grey

DRYING TIMES

- Recoat time: 3 hrs
- Dry through: 24 hrs

VOC CONTENT

121g/L

PACKAGING

20kg pail

CODE

20313

SINGLE COMPONENT RUBBER WATERPROOFING MEMBRANE



ARDEX WPM 179 LOW VOC

ARDEX WPM 179 is a one component liquid applied, latex modified, bituminous elastomeric waterproofing membrane.

- Easily applied: single pack, high build, long pot life
- Retains flexibility at low temperatures
- Resists ponding water (once fully cured)
- Water based – environmentally friendly and safe to use
- Excellent Chemical Resistance properties

TYPICAL APPLICATIONS

- Below ground tanking, basements and retaining walls (not negative hydrostatic situations)
- Bridge decks and concrete structures
- Planter boxes, terraces/balconies (protected)
- Corrosion protection of metal roofs and structures
- Waterproof liners for sewage and containment ponds, dams and tanks
- Underground structures/tunnel lining

SUBSTRATES

Masonry, concrete blocks, concrete, steel, sand cement screeds, renders.

COVERAGE

- Waterproof Membrane: covers approx. 8m² (D.F.T. at 1.0mm)

COLOURS

Black

DRYING TIMES

Recoat time: 2–4 hrs; Full cure: 24–48 hrs

VOC CONTENT

<1g/L

PACKAGING

15L pail

CODE

12981

EXTERNAL FAÇADE AND ROOF MEMBRANE



ARDEX WPM 310 (Shelterguard) LOW VOC

ARDEX WPM 310 is a tough, UV stable flexible premixed liquid applied waterproofing membrane. It has been specifically formulated as a general purpose membrane for exposed wall and roof waterproofing.

- Flexible – accommodates normal building movement
- Provides excellent UV resistance
- Decorative – choice of colours
- Low VOC – meets Green Building Council of Australia Green Star IEQ-13 requirements

TYPICAL APPLICATIONS

As a decorative textured finish and waterproofing of external walls and façades. ARDEX WPM 310 is also suitable as a waterproofing membrane over concrete roof and decks.

SUBSTRATES

Brick, masonry, concrete block, concrete screeds, and render.

COVERAGE

- Roof membrane application: 7m² D.F.T. – 1.0mm
- Wall membrane application: 24m² D.F.T. – 0.3mm

COLOURS

White, Koala Grey and Special Colour

DRYING TIMES

- Recoat time: 4 hrs
- Dry through: 24 hrs
- Full cure: 7 days

VOC CONTENT

100g/L

PACKAGING

15L pail
15L pail

CODE

10217 (White Base)
10212 (Koala Grey)

EXTERNAL ANTI-CARBONATION
FAÇADE MEMBRANE

ARDEX WPM 330

(Sheltercoat Façade Membrane)

LOW VOC

ARDEX WPM 330 is an extremely weather resistant water based acrylic waterproofing membrane. Specially designed as an exposed façade membrane, ARDEX WPM 330 prevents moisture, salt and carbon dioxide entering and damaging the building structure while still allowing the building to breathe.

- Protects buildings against chloride ion, sulfide ion and carbon dioxide attack
- Large range of durable colours
- Resists fungi and algae growth
- Low VOC – meets Green Building Council of Australia Green Star IEQ-13 requirements

TYPICAL APPLICATIONS

Building façades and external walls, roof parapets, silos, lighthouses and other external structures. Particularly important in coastal areas, high traffic density areas for application over concrete and brick surfaces.

SUBSTRATES

Rendered walls, brick/masonry walls, fibre cement sheets, tilt up and pre-cast concrete, light weight aerated concrete blocks.

COVERAGE

15L unit: covers approx. 20m² (two coats)
D.F.T. at 0.35mm

COLOURS

Special Colour

DRYING TIMES

- Recoat time: 2–4 hrs
- Full cure: 24 hrs

VOC CONTENT

61g/L

PACKAGING

15L pail 10392 (Special Colour)

CODE

WATER BASED
TRAFFICABLE MEMBRANE

ARDEX WPM 908

LOW VOC

ARDEX WPM 908 is a single part acrylic based trafficable membrane. It has specifically been developed for use as a hard wearing trafficable membrane on various substrates.

- Water based – safe to use, low odour and easy cleaning
- Hard wearing – excellent abrasion resistance properties
- Single component – ready to use, no mixing required
- Green Star – meets the benchmark for VOC credit in the Green Building Council of Australia's Rating Tools
- UV resistant – suitable for exposed applications
- Slip resistant – formulated to give anti-slip properties

TYPICAL APPLICATIONS

Pedestrian traffic podiums, terraces, balconies, roof decks, plant room floors, trafficable box gutters, steps, pathways, patios.

SUBSTRATES

Concrete, screeds, compressed fibre cement sheets wet area grade only.

COVERAGE

- 15L: covers approx. 12.5m² (3 coats)
D.F.T. – 0.60mm
- 2.5m²/L per coat

COLOURS

Grey, Special Colour

DRYING TIMES

- Recoat time: 2–4 hrs
- Full cure: 3–5 days

VOC CONTENT

70g/L

PACKAGING

15L (17kg) pail 11082 (Grey)
15L (17kg) pail 11084 (Special Colour)

CODE

WATER BASED EPOXY
MEMBRANE

ARDEX WPM 300

(HydrEpoxy 300)

LOW VOC

ARDEX WPM 300 is a two component water based epoxy polyamide membrane/barrier coating.

- Can be applied to damp surfaces
- AS 4020:2000 Potable Water Approved
- Hydrostatic pressure resistant waterproof membrane
- Prevents rising damp and formation of efflorescence
- Water based – safe to use in sensitive locations
- Low VOC – meets Green Building Council of Australia Green Star IEQ-13 requirements

TYPICAL APPLICATIONS

Low water vapour transmission coating and as a barrier/seal coating over freshly laid or damp concrete. Waterproofing barrier on the negative side in below grade surfaces such as basements, tunnels, liftwells, retaining walls and carparks. Waterproofing membrane or barrier coating over freshly laid hardened concrete, prior to the application of conventional levelling compounds carpet and tile adhesives.

SUBSTRATES

Brick, masonry, concrete block, concrete, stone, screeds, and renders.

COVERAGE

- Primer or efflorescence barrier: 60m²/20L kit, 12m²/4L kit (1 coat)
- Moisture barrier: 30m²/20L kit, 6m²/4L kit (2 coats)

COLOURS

Grey, Mojo Black

DRYING TIMES

- Recoat time: 4 hrs
- Full cure: 7 days

VOC CONTENT

26g/L

PACKAGING

4L kits 10207 (Grey), 10447 (Black)
20L kits 8000021 (Grey), 8000022 (Black)

CODE

SINGLE PART BARRIER
MEMBRANE

ARDEX WPM 368

ARDEX WPM 368 is a single component acrylic copolymer barrier coating that will prevent rising damp, efflorescence and will resist negative hydrostatic pressure when used in accordance with the technical data sheet.

- Can be applied to damp surfaces
- Can be safely applied to freshly laid hardened (green) concrete
- When applied directly to the substrate (dual coat system) the cured membrane will withstand 250kPa of hydrostatic pressure which is equivalent to a 25 metre head of water
- Prevents rising damp and the formation of efflorescence when used as a dual coat system

TYPICAL APPLICATIONS

It has excellent adhesion to most substrates including brick, masonry, concrete block, concrete, stone and is simple to use by brush or roller.

SUBSTRATES

Brick, masonry, concrete block, concrete, screeds, renders, and stone.

COVERAGE

- Water Stop: 45m² (1 coat)
- Moisture barrier: 22.5m² (2 coats)

COLOURS

Grey

DRYING TIMES

- Recoat time: 2–4 hrs
- Full cure: 7 days

PACKAGING

20kg pail

CODE

19623

GENERAL PURPOSE
WATER BASED PRIMER**ARDEX WPM 265**

(Sheltercoat Water Based Primer)

LOW VOC ★

ARDEX WPM 265 is a red water-based acrylic primer designed to seal porous substrates and enhance the adhesion of subsequent ARDEX undertile membranes.

- Water-based
- Suitable for most substrates
- Coloured – primed surfaces are easily identified
- Low VOC – meets Green Building Council of Australia Green Star IEQ-13 requirements

LOCATION

Internal/External

SUBSTRATES

New and old concrete, fibre cement, compressed fibreboards.

COVERAGE

6m²/L – may vary depending on surface porosity

COLOURS

Red

DRYING TIMES

Recoat time: 1 hr

VOC CONTENT

11g/L

PACKAGING

20L pail

CODE

10601

GENERAL PURPOSE
SOLVENT BASED PRIMER**ARDEX WPM 270**

(Sheltercoat Solvent Based Primer)

ARDEX WPM 270 is a clear solvent-based primer designed to seal and improve the adhesion of dense or highly porous substrates.

- Highly penetrating – ideal for porous substrates
- Heavy duty primer – suitable for dense concrete (>30MPa)
- Rapid drying
- Low viscosity binder that seals absorbent substrates and penetrates dust

LOCATION

External

SUBSTRATES

Fibre-cement sheets (wet area grade), marine plywood, concrete, renders and screeds, masonry/concrete blocks.

COVERAGE

6m²/L – may vary depending on surface porosity

COLOURS

Clear

DRYING TIMES

Recoat time: 30 mins

PACKAGING

20L metal pail

CODE

10204

HIGH PERFORMANCE
POLYMER ADDITIVE**ARDEX WPM 405**

(Sheltercrete Additive)

LOW VOC ★

ARDEX WPM 405 is an SBR, multi-purpose, concentrated liquid polymer additive which when used with sand/cement greatly improves the bond strength and flexibility.

- Water resistant – can be used as a temporary waterproofing sealer externally
- High strength – can be used as an admix for render/screeds
- Water based – safe to use and low odour
- Low VOC – meets Green Building Council of Australia Green Star IEQ-13 requirements

TYPICAL APPLICATIONS

Temporary waterproofing sealer in high exposure areas such as rooftops. Slurry coat prior to applying renders or screeds.

Admix for sand/cement mixes especially in repair mortars, fillets, covings renders and screeds.

SUBSTRATES

Renders, screeds, masonry.

COVERAGE

- Temp waterproofing: 12m² (2 coats) at 1mm
- Slurry coat: 3m²/L
- Render: 2m²/L

COLOURS

Clear

DRYING TIMES

16 hrs (for temp waterproofing/screeds)

VOC CONTENT

32g/L

PACKAGING

20L pail

CODE

10611

PERFORMANCE ENHANCING
POLYMER PRIMER & ADDITIVE**ARDEX WR PRIME****LOW VOC** ★

ARDEX WR Prime is a performance enhancing primer and additive for renders and other cement based construction products.

- Enhances bond strength, increases flexibility and working time of cement based construction products
- Improves surface strength and adhesion of cement based render
- Ideal as a primer and additive for most cement based construction products

LOCATION

Internal/External

SUBSTRATES

Masonry (Brick & Blockwork), Concrete walls, Autoclaved Aerated Concrete Blocks and Panels, Existing Render, Blueboard, Fibre-cement Sheet.

COVERAGE

One litre of ARDEX WR Prime is sufficient for approximately 6m².

COLOURS

White liquid

DRYING TIMES

When used as a primer, allow to dry to a clear, thin film prior to application of subsequent products.

PACKAGING

15L cube

CODE

23642

WOVEN REINFORCEMENT CLOTH



ARDEX DECKWEB

Polyester cloth used in critical areas like, cracks, movement joints, corner/coving areas and also wall floor junctions in conjunction with under tile membranes.

ARDEX Deckweb's principal function is to control correct membrane thickness in critical areas mentioned above.

PACKAGING

6 x 190mm x 50 roll
1 x 190mm x 50 roll

CODE

10292
10293



ROOFING SYSTEMS

ARDEX SHEET MEMBRANES

ENVIRONMENTALLY FRIENDLY AND
ENERGY EFFICIENT ROOFING MEMBRANES

ROOFING AND TANKING MEMBRANE



ARDEX BUTYNOL®

A synthetic rubber membrane with properties which resist ageing from heat, sunlight and ozone. It has excellent gas impermeability and toughness and remains flexible at low temperatures.

ARDEX Butynol® protects against water, moisture vapour, gases, sun, ozone, frost, acids, chemicals and bacteria.

- Single-ply, flexible synthetic rubber membrane
- Superior weatherability
- Potable water AS4020 certificate approved
- No maintenance required
- Meets requirements of AS4654 – Waterproofing membranes for external above-ground use

TYPICAL USES

Typical applications are roof membranes, external balconies and decks (protected) gutter linings, water containment (i.e. pillow tanks, reservoirs, pond liners), below grade applications.

TYPE

Butyl rubber

THICKNESS/WEIGHT

- 1.0mm (1.2kg/m²)
- 1.5mm (1.8kg/m²)

TOP SURFACE

Butyl rubber

BOTTOM SURFACE

Butyl rubber

ELONGATION

300%

ROLL SIZE

17.86m rolls (1.4m width)

ROLL WEIGHT

CODE

1.0mm (30kg) Black	13267
1.5mm (45kg) Black	13272
1.5mm (45kg) Grey	13282

BUTYNOL® ACCESSORIES



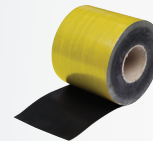
ARDEX WPM 299 SEAM PRIMER

A water resistant primer adhesive, used with seam tape for general lap bonding.



ARDEX CA 20P

Designed for sealing Butynol® flashings into chases. Available in Black and White.



ARDEX FLASHING TAPE

Underflashing for Butynol® in corners, pipes and penetrations.



ARDEX SEAM TAPE

Uncured Butyl cold gum tape for use in conjunction with ARDEX Seam Primer for bonding Butynol® lap joints.



ARDEX BUTYNOL® HOT TAPE

Used for welding large panels of Butynol® membrane together.



ARDEX UNCURED FLASHING TAPE

Designed for patching and detailing Butynol around pipes and penetrations.

BITUMEN ACCESSORIES



ARDEX WPM 240

Solvent based primer used for ARDEX bituminous membranes.

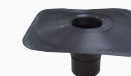


ARDEX BITUMINOUS ROOF SEALANT

One component, easy-to-use, UV-stable sealant with bitumen-based solvents.



ARDEX VAPOUR VENTS



ARDEX DROPPER



ARDEX SCUPPER



ARDEX PAVER SUPPORT PADS

NB: Other bitumen accessories include fixing washers, pressure seal, protection board.

UNDERTILE BUTYNOL® ACCESSORIES



ARDEX STB & STA TAPE

An uncured butynol tape with a fleece layer that is used in the ARDEX WPM 155 Rapid under tile waterproofing system.

CODE: 16870 (15m STB Tape)
19216 (2.4m STA Tape)



ARDEX CA 750 CONTACT ADHESIVE

A ready to use water based contact adhesive for bonding both vinyl skirting or ARDEX Undertile Butynol® Membrane (WPM 750 or WPM 1000).

CODE: 24995 (4L pail)
24196 (15L pail)



ARDEX CATALYST SPRAY

ARDEX Catalyst Spray with the use of Speedtec technology is a clear solution which when applied to nominated ARDEX Adhesives accelerates the tack time for quicker installation of floor coverings. This also acts as an innate film formation for ARDEX WPM 179 – Single Component Rubber Membrane.

CODE: 16550



ARDEX WA 98 ADHESIVE

Specially formulated adhesive for all Butynol® applications including broadspan bonding and lap jointing in non-aggressive or non-immersed condition exposure.



ARDEX WA 98 SOLVENT

Designed for general purpose clean-up and preparation procedures prior to the installation of ARDEX Butynol® membranes.

4.0 MM APP VENTED BASE SHEET



ARDEX WPM 114

(Shelterbit Vented
Base Sheet)

ARDEX WPM 114 is an APP (Atactic Polypropylene) Plastomeric type modified bitumen membrane vented base sheet, consisting of a specially formulated bituminous compound of distilled asphalt modified with selected high-grade viscoelastic polymers. ARDEX WPM 114 is used as part of a multi-layer waterproofing system where there may be potential moisture issues in the substrate.

TYPICAL USES

ARDEX WPM 114 is used as part of a multi-layer system in roofing applications for waterproofing. It has been designed to be used in situations where there may be potential moisture issues in the substrate and can only be used as the base sheet of a multi-layer roofing system.

TYPE

APP with SBS Strips

REINFORCEMENT

Polyester/Glass (180g/m²)

THICKNESS/WEIGHT

4.0mm

TOP SURFACE

Sanded polymer

BOTTOM SURFACE

Thermo-Adhesive strips

HEAT STABILITY

100°C

COLD FLEXIBILITY

-10°C

ROLL SIZE

10m x 1.0m x 4mm

ROLL WEIGHT

45kg

ROLLS PER PALLET

20

CODE

25223

2.7MM APP BITUMEN FIBRE BACKED BASE SHEET



ARDEX WPM 116

(Shelterbit Fibre Back
Base Sheet)

ARDEX WPM 116 is an A.P.P. type modified bitumen membrane slip or base sheet.

ARDEX WPM 116 is reinforced with a non-woven polyester.

- Excellent elongation
- Cold flexibility -5°C
- Good mechanical characteristics
- Good puncture resistance

TYPICAL USES

Used as a base layer to allow dispersion of vapour in exposed bitumen sheet waterproofing systems.

TYPE

APP

REINFORCEMENT

Polyester (50g/m²)

THICKNESS/WEIGHT

2.7mm

TOP SURFACE

Torch film

BOTTOM SURFACE

Polyester surface

HEAT STABILITY

110°C

COLD FLEXIBILITY

-5°C

ROLL SIZE

10m x 1.05m x 2.7mm

ROLL WEIGHT

30kg

ROLLS PER PALLET

28

CODE

10524

2MM SBS FIBREGLASS REINFORCED
BITUMINOUS MEMBRANE



ARDEX WPM 117
(Shelterstick Self-Adhesive
Membrane)

ARDEX WPM 117 (Shelterstick Self-adhesive Membrane) is a self-adhesive bituminous membrane.

- Cold applied and installed without the use of naked flames, offering a higher safety level on the job
- Highly resistant to acids, alkalis or other pollutants
- Membrane self seals on contact if being installed using nails or other fasteners

TYPICAL USES

Ideal for general waterproofing, foundations, tunnels, etc. and especially when, due to the type of operation or materials, the use of torch/fire must be avoided.

TYPE

SBS

REINFORCEMENT

Fibreglass

THICKNESS/WEIGHT

2mm

TOP SURFACE

Torch Film

BOTTOM SURFACE

Self-Adhesive

ROLL WEIGHT

34kg

ROLL SIZE

1m x 15m x 2mm

ROLLS PER PALLET

25

CODE

24560

3.0MM COMBINED REINFORCED
APP BITUMEN MEMBRANE



ARDEX WPM 150
(Shelterbit 3/160
Membrane)

ARDEX WPM 150 (Shelterbit 3/160) is an A.P.P. type modified bitumen membrane.

- A.P.P. modified compound
- Excellent cold flexibility to -5°C
- Heat welded laps provide homogeneous joint
- Combined reinforcement carrier
- High mechanical characteristics
- High puncture resistance

TYPICAL USES

ARDEX WPM 150 is used as a single layer or multi-layer tanking membrane in horizontal or vertical applications, also for waterproofing balconies, terraces and roofs. ARDEX WPM 150 membrane is a sandwich membrane and must be protected from UV radiation.

TYPE

APP

REINFORCEMENT

Fibreglass and polyester (150g/m²)

THICKNESS/WEIGHT

3.0mm

TOP SURFACE

Sand

BOTTOM SURFACE

Torch film

HEAT STABILITY

110°C

COLD FLEXIBILITY

-5°C

ROLL SIZE

10m x 1.0m x 3.0mm

ROLL WEIGHT

35kg

ROLLS PER PALLET

28

CODE

10527

4.5KG/M² MINERAL COATED
APP BITUMEN MEMBRANE



ARDEX WPM 185
(Shelterbit Mineral
Membrane)

ARDEX WPM 185 is an A.P.P. type modified bitumen membrane.

- Positive vapour barrier
- Excellent resistance to atmospheric agents
- Cold flexibility -5°C
- Resistant to chemical attacks
- Withstand thermal shocks
- High puncture resistance

TYPICAL USES

ARDEX WPM 185 is used as a cap layer in exposed membrane systems (allowing light foot traffic for maintenance). ARDEX WPM 185 is available in slate grey (mineral chip finish).

TYPE

APP

REINFORCEMENT

Fibreglass and polyester (180g/m²)

THICKNESS/WEIGHT

4.5kg/m²

TOP SURFACE

Slate Chip

BOTTOM SURFACE

Torch film

HEAT STABILITY

110°C

COLD FLEXIBILITY

-5°C

ROLL SIZE

10m x 1.0m x 4.0mm

ROLL WEIGHT

36kg (8m)

ROLLS PER PALLET

25

CODE

16639

3.0MM SBS BITUMEN
MEMBRANE



ARDEX WPM 188
(Shelterbit Garden
Tanking Membrane)

ARDEX WPM 188 is an SBS type modified bitumen membrane. ARDEX WPM 188 is treated with a preventative chemical to stop roots from plants penetrating the membrane.

- Positive vapour barrier
- Excellent resistance to pollutants and aging
- High flexibility during application at sub-zero temperature with no physical strain
- Maintains shape stability at high temperatures
- High resistance to perforation
- Resists root growth ingress into both the membrane and the laps

TYPICAL USES

Planter boxes, garden beds, roof gardens, flower beds and green civil works. Tanking membrane in horizontal and vertical applications.

TYPE

SBS

REINFORCEMENT

Combine polyester/glass

THICKNESS/WEIGHT

3mm

HEAT STABILITY

90°C

COLD FLEXIBILITY

-20°C

ROLL SIZE

10m x 1m x 3mm

ROLL WEIGHT

38kg

ROLLS PER PALLET

28

CODE

16634

4.0MM REINFORCED APP
BITUMEN MEMBRANE



ARDEX WPM 444

(Shelterbit Phoenix
Star – Plain)

ARDEX WPM 444 (Shelterbit Phoenix Star) is an APP (Atactic Polypropylene) plastomeric type modified bitumen membrane, consisting of a specially formulated bituminous compound of distilled asphalt modified with selected high grade visco-elastic polymers and reinforced with a combined reinforcement (polyester and fibreglass).

TYPICAL USES

ARDEX WPM 444 (Shelterbit Phoenix Star) is designed for use as a multi-layer system on concrete or plywood substrates, or as a single layer system on concrete substrates with a protective topping such as paving slabs or concrete.

TYPE

APP

REINFORCEMENT

Fibreglass and polyester

THICKNESS/WEIGHT

4.0mm

TOP SURFACE

Sanded or talc

BOTTOM SURFACE

Polythene film

HEAT STABILITY

130°C

COLD FLEXIBILITY

-15°C

ROLL SIZE

10m x 1m x 4mm

ROLL WEIGHT

Approx. 40kg

ROLLS PER PALLET

23

CODE

19413

1.5MM SBS SELF-ADHESIVE
SHEET MEMBRANE



ARDEX WPM 3000X

(Shelterseal 3000X
Membrane)

ARDEX WPM 3000X is a peel and stick SBS rubber modified bituminous/asphalt membrane.

ARDEX WPM 3000X can be adjusted should it initially be placed in the wrong position.

- Cold application – no open flames
- Ideal for restricted spaces
- Chemical resistance
- Highly resistant to acids, alkalis and other pollutants
- Flexibility and adaptability
- Self sealing – the membrane self seals on contact maintaining its watertightness

TYPICAL USES

Planter boxes, foundations, below-ground applications, retaining walls, balconies, decks under cement screeds or other compatible hard coverings.

TYPE

SBS

THICKNESS/WEIGHT

1.5mm

HEAT STABILITY

90°C

COLD FLEXIBILITY

-30°C

ROLL SIZE

20m x 1m x 1.5mm

ROLL WEIGHT

30kg

ROLLS PER PALLET

25

CODE

10543

RUBBER MEMBRANE
WATERPROOFING SYSTEM



ARDEX WPM 750

(Undertile Butynol®)

ARDEX WPM 750 Undertile Butynol® is a undertile waterproofing sheet membrane system that is used in tiled areas such as showers and bathrooms.

The system provides a more secure system with consistent gauge thickness and heat welded laps that can be tank tested intermediately and tiled to directly.

- Sheet membrane for waterproofing tiled areas
- Tiling can begin 60 minutes after membrane installation
- Thin & consistent waterproofing gauge
- Heat weld corners and laps
- Available with a unique clamp waste outlet
- Meets requirements of AS4654 – Waterproofing membranes for external above-ground use

TYPICAL USES

It is used for waterproofing tiled areas such as showers and bathrooms.

TYPE

Synthetic rubber

THICKNESS/WEIGHT

0.75mm

TOP SURFACE

Polypropylene

BOTTOM SURFACE

Polypropylene

ROLL SIZE

20m x 1.4m x 0.75mm

ROLL WEIGHT

Approx. 16.32kg

CODE

13319

VERSATILE RUBBER
WATERPROOFING MEMBRANE



ARDEX WPM 1000

(Weldable Waterproofing
Membrane)

ARDEX WPM 1000 Weldable Waterproofing Membrane is a versatile rubber membrane that can be heat welded, that is used in tiled areas such as balconies, decks, roof tops and podiums.

- Sheet membrane for waterproofing tiled areas
- Tiling can begin 60 minutes after membrane installation
- Thin & consistent waterproofing gauge
- Heat weld corners and laps
- Available with a unique clamp waste outlet
- Meets requirements of AS4654 – Waterproofing membranes for external above-ground use

TYPICAL USES

It is suitable for waterproofing underground tanking, rooftops, decks, undertile, canal and pond linings.

TYPE

Synthetic rubber

THICKNESS/WEIGHT

1.2mm

TOP SURFACE

Polypropylene

BOTTOM SURFACE

Polypropylene

ROLL SIZE

20m x 1.4m x 1.2mm

ROLL WEIGHT

Approx. 38kg

CODE

16475

BELOW GROUND TANKING MEMBRANE



ARDEX WPM 1500

ARDEX WPM 1500 is a fleece-lined, weldable tanking membrane for below ground applications. It is generally applied prior to concrete being cast against it. ARDEX WPM 1500 is fully bonded which allows resistance against lateral water migration.

- Accommodates structural movements
- Resistant to chemical attacks
- Withstands thermal shocks
- High elongation with excellent crack bridging capabilities
- Forms a unique continuous waterproofing membrane
- Not reliant on confining pressures, hydration or tape seams
- Welded detailing creates very strong watertight laps
- Resists tearing, flex cracking, bubbling and abrasions
- Versatile vapour barrier

TYPICAL USES

It is used as a single layer or multilayer membrane in horizontal or vertical applications for waterproofing for below ground tanking.

TYPE

Fleece-lined, weldable tanking membrane.

THICKNESS/WEIGHT

1.5mm

ROLL SIZE

20m x 1.4m x 1.5mm

ROLL WEIGHT

Approx. 53kgs

CODE

19807

WELDABLE WATERPROOFING MEMBRANE



ARDEX ROOT REPELL™

ARDEX ROOT REPELL™ Weldable Waterproofing Membrane is a high performance, single-ply, butyl-based membrane that can be heat welded. Specially formulated ARDEX ROOT REPELL™ contains a premium root inhibitor that repels root growth without killing the root. It is designed primarily for areas covered with or exposed to soil and plants. Once installed ARDEX ROOT REPELL™ will remain a permanently flexible waterproof lining and bonds to most building surfaces. ARDEX ROOT REPELL™ also has excellent gas impermeability and toughness and will remain flexible at low temperatures.

- Meets requirements of AS4654 – Waterproofing membranes for external above-ground use

TYPICAL USES

Suitable for waterproofing planter boxes, living roofs and as a damp proofing membrane.

TYPE

Butyl

THICKNESS/WEIGHT

1.0mm

ROLL SIZE

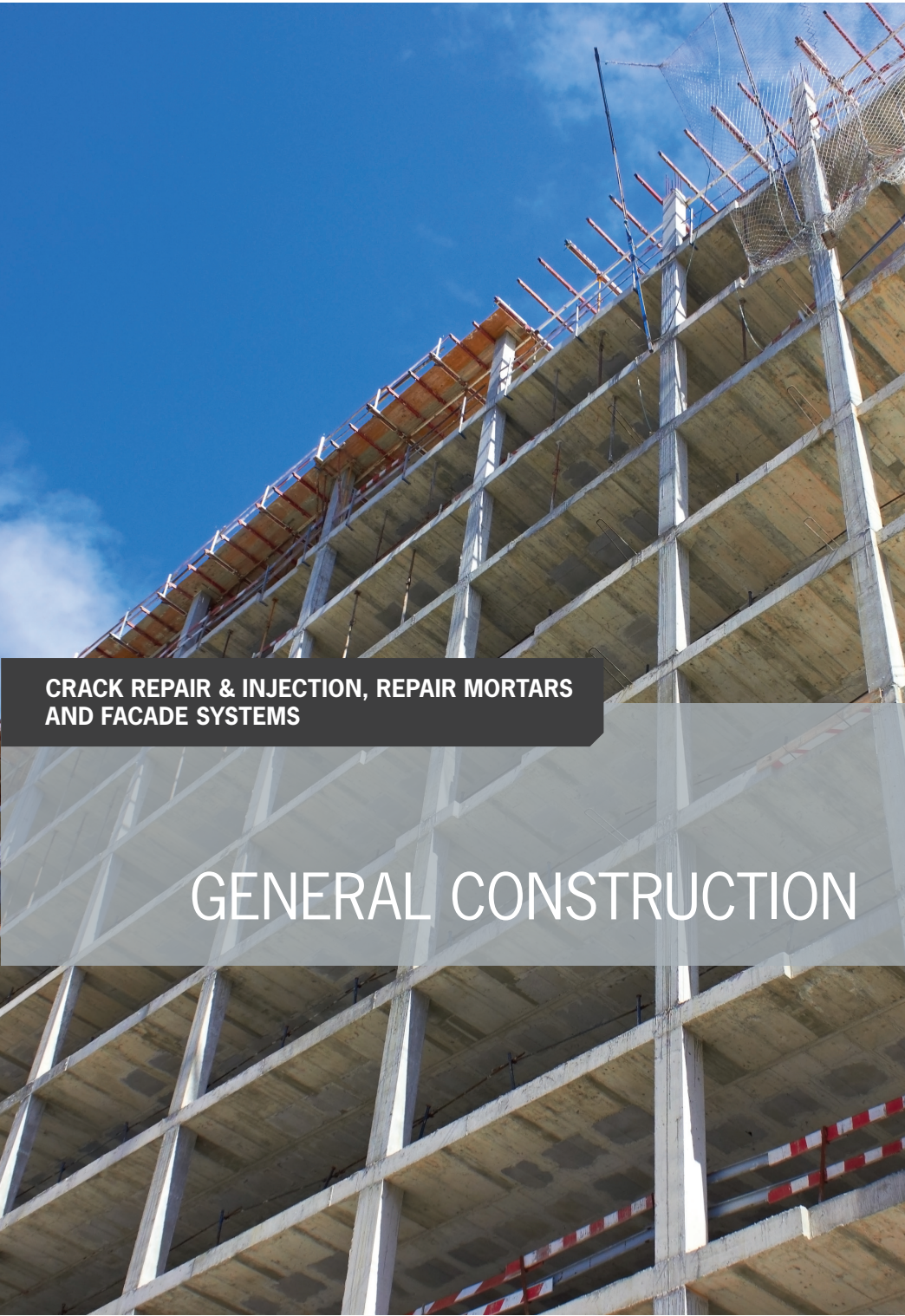
20m x 1.4m x 1.0mm

ROLL WEIGHT

Approx. 38kg

CODE

24578



CRACK REPAIR & INJECTION, REPAIR MORTARS AND FACADE SYSTEMS

GENERAL CONSTRUCTION

FIBRE-REINFORCED FAIRING COAT



ARDEX BR 120 FC

ARDEX BR 120 FC is a fairing skim coat for the final smoothing of masonry and brick walls. It is the recommended Fairing Coat to be used in conjunction with ARDEX BR Repair Mortars. ARDEX BR 120 FC is specifically designed for the preparation of façade surfaces prior to the application of ARDEX WPM 330 Façade Anti-Carbonation Membrane or ARDEX WPM 310 Façade and Roof Membrane.

LOCATION

Internal/External

SUBSTRATES

Concrete

THICKNESS

1–3mm

BENEFITS

Fibre-reinforced, polymer modified one component system with adjustable consistency.

COVERAGE

- 12m² at 1mm thickness
- 4m² at 3mm thickness

COLOURS

Grey

DRYING AND CURING:

- Approximately 16 hours at 23°C and 50% RH.
- Pot life at 23°C is 45–60 minutes
- Hardening in >4 hours

PACKAGING

20kg bag

CODE

24535

STRUCTURAL CONCRETE PATCHING & REPAIR MORTAR



ARDEX BR 340

ARDEX BR 340 MICROTEC® Fibre-Reinforced, Polymer-Modified, Structural Concrete Patching and Repair Mortar is designed for reinstating concrete surfaces damaged through concrete spalling and other chemical or mechanical causes. ARDEX BR 340 is a high-build patching mortar and is capable of being applied up to a thickness of 80mm on vertical, horizontal and overhead surfaces. It is designed to be used in conjunction with an appropriate ARDEX bonding bridge or primer and ARDEX BRX 60 LO Low Output Anodes for ultimate corrosion control and cathodic prevention.

LOCATION

Internal/External

SUBSTRATES

Concrete

THICKNESS

10–80mm

BENEFITS

MICROTEC® fibre-reinforced, polymer modified with good adhesion to concrete. Contains active corrosion inhibitor and is shrinkage compensated.

COVERAGE

1.25m² at 10mm thickness

DRYING AND CURING:

- Pot life at 23°C is 30–45 minutes
- Initial Set in 45–60 minutes
- Final Set in 60–90 minutes

PACKAGING

20kg bag

CODE

24611

HIGH-RESISTIVITY, STRUCTURAL CONCRETE PATCHING & REPAIR MORTAR



ARDEX BR 345

ARDEX BR 345 MICROTEC® Fibre-Reinforced, High Resistivity, Polymer-Modified, Structural Concrete Patching and Repair Mortar is designed for reinstating concrete surfaces damaged through concrete spalling and other chemical or mechanical causes. ARDEX BR 345 is a high-build patching mortar and is capable of being applied up to a thickness of 80mm on vertical, horizontal and overhead surfaces. It is designed to be used for applications where high resistivity of the mortar is required. For applications where anodes are required, use ARDEX BR 340 instead.

LOCATION

Internal/External

SUBSTRATES

Concrete

THICKNESS

10–80mm

BENEFITS

MICROTEC® fibre-reinforced, high-resistivity, polymer modified with excellent adhesion to concrete. Contains active corrosion inhibitor and is shrinkage compensated.

COVERAGE

1.25m² at 10mm thickness

DRYING AND CURING:

- Pot life at 23°C is 30–45 minutes
- Initial Set in 45–60 minutes
- Final Set in 60–90 minutes

PACKAGING

20kg bag

CODE

25475

FLOWABLE STRUCTURAL MICRO CONCRETE



ARDEX BR 460 FLOW

ARDEX BR 460 FLOW High-Performance, Flowable Structural Micro Concrete is a pourable repair mortar designed for reinstating horizontal concrete surfaces damaged through concrete spalling and other chemical or mechanical causes. ARDEX BR 460 FLOW exhibits superior flow characteristics and is capable of being applied in thicknesses of 20mm to 200mm in one pour. It is designed to be used in conjunction with ARDEX BRX 60 LO Low Output Anodes for ultimate corrosion control and cathodic prevention.

LOCATION

Internal/External

SUBSTRATES

Concrete

THICKNESS

20–200mm

BENEFITS

Low odour, polymer modified with good adhesion to concrete. Contains active corrosion inhibitor and is shrinkage compensated.

COVERAGE

20kg of powder makes approximately 10L of mortar.

- 0.5m² at 20mm thickness
- 0.1m² at 100mm thickness

DRYING AND CURING:

- To be used immediately after mixing
- Initial Set in 4–6 hours
- Final Set in 7–9 hours

PACKAGING

20kg bag

CODE

24543

ZINC-RICH EPOXY PRIMER



ARDEX BR 10 ZP

ARDEX BR 10 ZP is a zinc-rich, cold galvanising primer for long-term, extra heavy duty corrosion protection. It is designed to prevent corrosion through galvanic protection by forming a protection barrier, encapsulating the metal in a zinc film. This is ideal for use on clean, rust free steel in highly corrosive environments such as coastal regions and for use on all structural steelwork. ARDEX BR 10 ZP will react on ferrous metals to replace damaged surfaces and provide a protective barrier.

LOCATION

Internal/External

SUBSTRATES

Structural steel

COVERAGE

Practical coverage may depend on surface profile, method of application and dry film thickness. Higher film thickness will lead to lower coverage. Cooler temperature, higher film thickness, or higher humidity conditions will lead to longer drying times. As a guide, 20 litres of ARDEX BR 10 ZP will cover 9m².

COLOURS

Grey

DRYING AND CURING:

- Touch-dry in 30 minutes
- Re-coat time in 16 hours

PACKAGING

1L pail

CODE

25472



SACRIFICIAL ZINC ANODES FOR CATHODIC PREVENTION



ARDEX BRX 60 LO

ARDEX BRX 60 LO Low Output Anodes have been developed specifically for corrosion control and cathodic prevention to be used in conjunction with the ARDEX BR Repair Mortar Range. The core of the ARDEX BRX 60 LO Anode is a 60gm sheet of zinc coated with an activation paste.

- No complex design
- No wiring installation or external power source needed
- No regular checking and adjustment of current supply
- Simple and easy installation
- Cost-effective and attractive

TYPICAL USES

Columns, beams and slabs, balconies, precast and in-situ cast façade, pipes, foundations, wharf beams and soffits, car parks, retaining walls, tunnel linings.

LOCATION

Internal/External

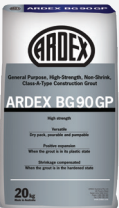
PACKAGING

1 anode

CODE

25304

GENERAL PURPOSE, HIGH-STRENGTH CONSTRUCTION GROUT



ARDEX BG 90 GP

ARDEX BG 90 GP is a general purpose, high-strength, Class-A-Type construction grout that can be mixed to a non-slump or pourable mix and is suitable for a wide range of projects and applications. The cement-based formulation contains additives that provide positive expansion when the grout is in its plastic state and is also shrinkage compensated when in the hardened state. It is ideal for applications where high compressive and flexural strength is required.

LOCATION

Internal/External

SUBSTRATES

Concrete

THICKNESS

12–100mm

BENEFITS

High compressive strength and versatile.

COLOURS

Grey powder

DRYING AND CURING

- Pot life is 20 minutes
- Initial set: 30 minutes (stiff), 2.5 hours (plastic), 6.5 hours (flowable)
- Final set: 45 minutes (stiff), 3 hours 45 minutes (plastic), 7 hours (flowable)

PACKAGING

20kg bag

CODE

25104

FIBRE-REINFORCED POLYMER RENDER



ARDEX WR 80 FR

LOW VOC 

ARDEX WR 80 FR is a fine-medium grade render and is suitable for rendering walls, both internally and externally, at application thicknesses from 2–10mm. When used with an appropriate pump, a build-up of 40mm can be achieved in one coat.

LOCATION

Internal/External

SUBSTRATES

Masonry (Brickwork & Blockwork), Concrete walls, AAC – Autoclaved Aerated Concrete Blocks and Panels, EPS Foam Panels, Existing Render, Blueboard, Painted surfaces.

THICKNESS

2–10mm

BENEFITS

No maturing time required; can be applied immediately after mixing.

COVERAGE

Coverage will vary depending on the condition of the surface and site conditions. As a guide, 20kg of ARDEX WR 80 FR mixes to 13 litres of mortar.

- As a guide, 20kg will cover:
- 7m² at 2mm thickness
- 3m² at 5mm thickness

COLOURS

Grey powder

DRYING TIMES

- Touch-dry in 1–2 hours
- Subsequent coats after 4–8 hours

PACKAGING

20kg bag

CODE

30147

GENERAL PURPOSE ACRYLIC RENDER



ARDEX WR 100

LOW VOC 

ARDEX WR 100 is a fine-grade acrylic render suitable for rendering walls, both internally and externally, at application thicknesses of 2–10 mm. ARDEX WR 100 is easy to use due to its superior non-slump and creamy consistency.

- No maturing time required – can be applied immediately after mixing

LOCATION

Internal/External

SUBSTRATES

Masonry (Brickwork & Blockwork), Concrete walls, AAC – Autoclaved Aerated Concrete Blocks and Panels, EPS Foam Panels.

THICKNESS

2–10mm

BENEFITS

No maturing time required, can be applied immediately after mixing.

COVERAGE

Coverage will vary depending on the condition of the surface and site conditions. As a guide, 20kg of ARDEX WR 100 mixes to 13 litres of mortar.

- As a guide, 20kg will cover:
- 6.5m² at 2mm thickness
- 2.6m² at 5mm thickness
- 1.3m² at 10mm thickness

COLOURS

Light grey powder

DRYING TIME

- Touch-dry in 1–2 hours
- Subsequent coats after 4–8 hours

PACKAGING

20kg bag

CODE

23638

FIBRE REINFORCED, POLYMER MODIFIED RENDER



ARDEX WR 120 FR

LOW VOC 

ARDEX WR 120 FR is a fine-grade, fibre-reinforced, acrylic render suitable for rendering walls, both internally and externally, at an application thickness from 2–12mm. When used with an appropriate pump, a build-up of 30mm can be achieved in one coat.

- Fibre-reinforced to increase impact resistance and minimise cracking

LOCATION

Internal/External

SUBSTRATES

Masonry (Brickwork & Blockwork), Concrete Walls, AAC – Autoclaved Aerated Concrete, Blocks and Panels, EPS Foam Panels.

THICKNESS

2–12mm

Up to 30mm when pump applied

BENEFITS

No maturing time required; can be applied immediately after mixing.

COVERAGE

Coverage will vary depending on the condition of the surface and site conditions. As a guide, 20kg of ARDEX WR 120 FR mixes to 13 litres of mortar.

- As a guide, 20kg will cover:
- 6.5m² at 2mm thickness
- 2.6m² at 5mm thickness
- 1.3m² at 10mm thickness

COLOURS

Light grey powder

DRYING TIME

- Touch-dry in 1–2 hours
- Subsequent coats after 4–8 hours

PACKAGING

20kg bag

CODE

24968

PERFORMANCE ENHANCING POLYMER PRIMER & ADDITIVE



ARDEX WR PRIME

LOW VOC 

ARDEX WR Prime is a performance enhancing primer and additive for renders and other cement based construction products.

- Enhances bond strength, increases flexibility and working time of cement based construction products
- Improves surface strength and adhesion of cement based render
- Ideal as a primer and additive for most cement based construction products

LOCATION

Internal/External

SUBSTRATES

Masonry (Brick & Blockwork), Concrete walls, AAC – Autoclaved Aerated Concrete Blocks and Panels, Existing Render, Blueboard, Fibre-cement Sheet.

BENEFITS

When used as an additive for cement based renders, adhesives, screeds and grouts, ARDEX WR Prime will significantly enhance bond strength and increase flexibility and working time. As a primer, it will improve adhesion to masonry, concrete walls, AAC panels, existing render, blueboard and fibre-cement sheet.

COVERAGE

One litre of ARDEX WR Prime is sufficient for approximately 6m².

COLOURS

White liquid

DRYING TIMES

When used as a primer, allow to dry to a clear, thin film prior to application of subsequent products.

PACKAGING

15L cube

CODE

23642

POLYURETHANE-BASED
JOINT SEALANT



ARDEX RA 040

ARDEX RA 040 is a one-component, polyurethane-based joint sealant. It has excellent bond strength to most porous and non-porous substrates without the use of a primer. ARDEX RA 040 is non-sag and may be applied on vertical and horizontal surfaces.

- Excellent primerless adhesion to most substrates
- Excellent weathering and UV stability
- Perfect for vertical and overhead repairs

LOCATION

Internal/External

SUBSTRATES

Aluminium, concrete, masonry, metals.

COVERAGE

Varies upon joint width and depth.

COLOURS

Grey and white

DRYING AND CURING

24 hours/2mm

PACKAGING

600mL sausage

CODE

24541 (Grey)
24554 (White)
30596 (Off White)

FAST SETTING SEMI-RIGID
POLYUREA JOINT SEALANT



ARDEX RA 54

LOW VOC

ARDEX RA 54 is used to fill interior control joints or new construction saw joints on horizontal concrete surfaces. With a very rapid cure time, repaired joints can be opened to traffic in 90 minutes.

- Fill interior control joints or new construction joints
- Heavy duty vehicle traffic – Designed for individual floor applications
- Rapid cure – Trafficable in 90 minutes

LOCATION

Designed for industrial floor applications receiving heavy duty vehicle traffic. This can be used in exterior applications, when minimal (10% to 12%) joint movement from thermal cycling will occur.

SUBSTRATES

Concrete

COVERAGE

Approx. 3 linear metres with a joint size of 3 x 25mm.

COLOURS

Grey

DRYING AND CURING

Can be shaved in approx. 45 minutes, open to full traffic in 90 minutes.

VOC CONTENT

7g/L

PACKAGING

254mL cartridge
40kg commercial kit

CODE

19929
8004938

HYBRID POLYURETHANE
CRACK & SPALL REPAIR



ARDEX RA 56

LOW VOC

ARDEX RA 56 is an ultra-low viscosity, 2-component hybrid polyurethane adhesive. It is a rapid curing concrete repair material used when minimal down time is crucial.

- Cures stronger than concrete
- Ultra Low Viscosity – Offers deep penetration into cracks
- Rapid cure – Trafficable in less than 20 minutes
- Ideal for spall repair when mixed with aggregate

LOCATION

Internal/External

SUBSTRATES

Concrete

COVERAGE

Coverage varies with depth of fill area.

COLOURS

Grey

DRYING AND CURING

Open to full traffic in 60 minutes.

VOC CONTENT

17g/L

PACKAGING

254mL cartridge
4L commercial kit

CODE

19930
30595

MULTI-PURPOSE EPOXY
REPAIR ADHESIVE



ARDEX RA 84

ARDEX RA 84 is a two-component, non-sag, styrene-free, acrylic system used for anchoring and dowelling applications in uncracked concrete using threaded rod and rebar. Due to its ultra-fast cure time, it is an ideal capping gel for ARDEX Crack Injection applications. ARDEX RA 84 is moisture insensitive, allowing installation and curing in damp, water-saturated environments.

- Ultra-fast 30 minute full cure time at 25°C in dry concrete
- High bond strength with fast cure times
- Easily dispensable even at low temperatures
- Styrene-free
- Non-sag

SUBSTRATES

Concrete

COLOURS

Light grey

DRYING AND CURING

20 minutes – 4 hours depending on substrate conditions.

PACKAGING

300ml cartridge

CODE

30509

MULTI-PURPOSE EPOXY
REPAIR ADHESIVE



ARDEX RA 88 PLUS

LOW VOC

ARDEX RA 88 is a two component, high performance ceramic blend epoxy. No-drip, non-sag, repair adhesive perfect for horizontal, vertical and overhead use (trowelable).

- Non-sag – Perfect for overhead and vertical repairs
- High strength – Stronger than concrete
- Trowelable and cure underwater

LOCATION

It can also be used for repairing holes, spalls and cracks in concrete, repairing rotted wood, installing anchor bolts and repairing hand rails.

SUBSTRATES

Almost any material, including metal, concrete, brick, wood, stone, block and other substrates.

COVERAGE

Approx. 6 linear metres with a bead thickness of 6 x 6mm.

COLOURS

Grey

DRYING AND CURING

Open to full traffic in 2–3 hours, ready to receive paint in 2–3 hours.

VOC CONTENT

53g/L

PACKAGING

254mL cartridge

CODE

19927

STRUCTURAL CONCRETE
CRACK INJECTION EPOXY



ARDEX RA 142

LOW VOC

ARDEX RA 142 is a Super Low Viscosity, two-component epoxy adhesive perfect for gravity-feed and pressure injection repair of hairline to fine width horizontal cracks. It can also be used as an epoxy mortar for spall repair when mixed with aggregate.

- Very thin liquid for superior crack penetration
- 100% solids, solvent free system with low VOC content
- Pressure injection and gravity feed structural crack repair in horizontal concrete, masonry for cracks from 0.05mm to 3mm
- Epoxy resin binder for epoxy mortar patching and overlay of interior surface using addition of aggregate
- Shear fracture repairs on interior and exterior concrete slabs

LOCATION

Internal/External

SUBSTRATES

Almost any material

COVERAGE

Coverage varies

COLOURS

Amber tint

DRYING AND CURING

Fully cured in 24 hours

VOC CONTENT

8g/L

PACKAGING

470mL dual cartridge

CODE

22780

STRUCTURAL CONCRETE
CRACK INJECTION EPOXY



ARDEX RA 144

LOW VOC

ARDEX RA 144 is a low viscosity, high modulus structural epoxy adhesive used for a variety of repair projects. It can also be used as an epoxy mortar for spall repair when mixed with aggregate.

- 100% solids, solvent free system with low VOC content
- Pressure injection and gravity feed structural crack repair in horizontal concrete, masonry for cracks from 3mm to 6mm
- Epoxy resin binder for epoxy mortar patching and overlay of interior surface using addition of aggregate
- Shear fracture repairs on interior and exterior concrete slabs

LOCATION

Internal/External

SUBSTRATES

Almost any material

COVERAGE

Coverage varies

COLOURS

Amber tint

DRYING AND CURING

Fully cured in 24 hours

VOC CONTENT

8g/L

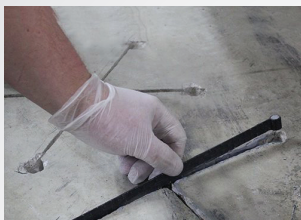
PACKAGING

470mL dual cartridge

CODE

22791

CARBON-FIBRE CRACK BRIDGING STITCH



CONCRETE CRACK LOCK

The Concrete Crack Lock (CCL) is a revolutionary new product that was developed to improve concrete crack repair. Once installed, the CCL permanently bonds both sides of the crack together. Due to the unique shape of the CCL and the preparation in the concrete, the tensile strength of the carbon fibre is relied upon as well as the epoxy bond strength along its length.

TYPICAL USES

The Concrete Crack Lock has been engineered to stop cracks in concrete slabs, poured walls, masonry, concrete block foundations, columns, industrial buildings, bridges, and foundations. The CCL System is designed for cracks of various sizes under virtually any circumstance. It can also be used to increase seismic strength to repairs after an earthquake.

BENEFITS

High Strength, Non-Corrosive and Alkali Resistant with Minimal Aesthetic Impact.

UNPARALLELED STRENGTH

The Concrete Crack Lock permanently locks both sides of the crack together, preventing any further movement. Due to the shape of the Concrete Crack Lock, the tensile strength of the carbon fibre is maximised permanently holding both sides of the crack together. The Concrete Crack Lock eliminates any potential for corrosion, and reduces call-backs.

PACKAGING

Bag of 20 30440

Exclusively distributed in Australia by



INTRODUCING
THE ULTIMATE
CRACK
REPAIR PRODUCT



RHINO CARBON FIBRE CONCRETE CRACK LOCK™

Introducing a revolutionary new concrete repair product designed to make crack reinforcement more efficient and less labour intensive.



CRACK REPAIR AND INJECTION ACCESSORIES



ARDEX INJECTION T-PORT T-PORT 25-PACK

CODE: 23617

Injection Ports for ARDEX Crack Injection Range.



ARDEX INJECTION CHECK WINDOWS CHECK WINDOW 25-PACK

CODE: 23618

Check windows for ARDEX Crack Injection Range.



HEAVY DUTY DUAL-CARTRIDGE CAULKING GUN (2:1 RATIO) 470ML

CODE: 23609

Recommended dispensing gun for ARDEX Crack Injection Epoxies.



HEAVY DUTY CAULKING GUN

CODE: 20281

Recommended dispensing gun for ARDEX Crack Repair Range.



ARDEX RA 56 NOZZLE - 3-PACK

CODE: 19973

Mixing nozzles for ARDEX RA 56.



ARDEX RA 88/54 NOZZLE - 3-PACK

CODE: 19972

Mixing nozzles for ARDEX RA 54, RA 84 & RA 88.



ARDEX INJECTION MIXING NOZZLE - 3-PACK

CODE: 23615

Mixing nozzles for ARDEX Crack Injection Range.

DISCLAIMER

The technical details, recommendations and other information contained in this catalogue are given in good faith and represent the best of our knowledge and experience at the time of printing. It is your responsibility to ensure that our products are used and handled correctly and in accordance with any applicable Australian Standard, our instructions are recommendations and only for the uses they are intended.

We also reserve the right to update information without prior notice to you to reflect our ongoing research and development program. Country specific recommendations, depending on local standards, codes of practice, building regulations or industry guidelines, may affect specific installation recommendations. The supply of our products and services is also subject to certain terms, warranties and exclusions, which may have already been disclosed to you in prior dealings or are otherwise available to you on request. You should make yourself familiar with them.

© ARDEX Australia Pty Ltd 2018

NOTES



SYSTEM **ARDEX**
PREMIUM PERFORMANCE

■ ARDEX AUSTRALIA PTY LTD

7/20 Powers Road
Seven Hills NSW 2147

Phone: 1300 788 780

Email: technicalservices@ardexaustralia.com

Web: www.ardexaustralia.com

■ TOLL FREE TECHNICAL SERVICES

1800 224 070 (Australia)

0800 227 339 (NZ)

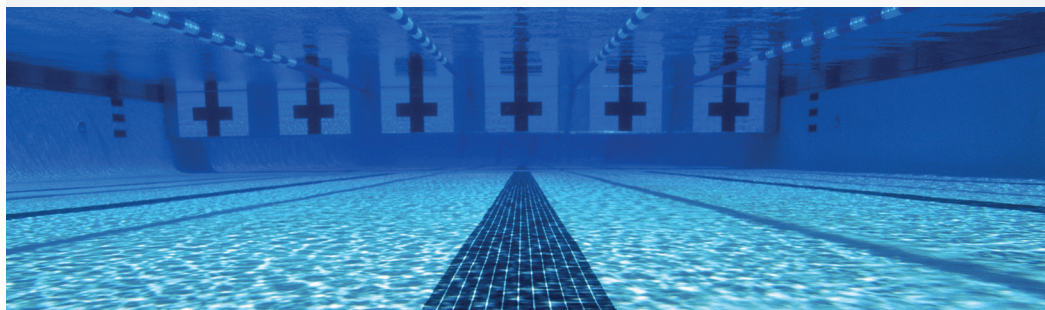
■ ARDEX NEW ZEALAND LTD

15 Alfred Street
Onehunga, Auckland 1061

Phone: 0800 227 339

Email: info@ardexnz.com

Web: www.ardex.co.nz



Stockist details:

