



ARDEX SPECIFICATION

EDUCATION

ARDEX GROUP

For more than 70 years, ARDEX has been the quality leader for an entire industry, offering excellent building chemicals with supreme processing reliability – the brand of choice for installers and wholesalers.

Strong internal growth and intelligent acquisitions in foreign markets today puts the ARDEX Group on the map with 53 subsidiaries and 3000 employees in over 100 countries on all continents, with one unique theme around the world; ARDEX ensures our valued customers receive the same high quality products and services.

ARDEX Australia is part of the ARDEX Group, a company founded in Germany in 1949, that has grown to become a global business, providing engineered solutions for tiling, flooring, waterproofing and concrete repair.

From sub-floor to roofing, we have developed products that stand the test of time – and moisture. Non-failure in these areas, even under extreme conditions, is critical which is why so many professionals rely on ARDEX.

Innovation has been a key influencer to this continued success, with technologies introduced many years ago still unique in their respective industries today. Being part of the Global ARDEX Group, ARDEX Australia has access to a huge research and development resource which is continually developing world unique products and technologies.



SYSTEM ARDEX

ARDEX is committed to developing products that are easy to use and offer high performance. ARDEX products, systems and services are designed to ensure professional contractors get the competitive advantage of a lower total cost of installation through superior performance.

ARDEX tiling and waterproofing products are designed to work together for total reliability and performance. Each product is the careful result of research and development combining the input of contractors, specifiers and installers to ensure absolute product compatibility.

A system of high quality, totally compatible products matched to unparalleled technical and field support.

We call this SystemARDEX.

SUSTAINABILITY



Source raw materials, packaging and products responsibly and work with our suppliers to deliver materials within our sustainability platform objectives.



Consider the life-cycle of products from innovation to disposal, and apply product declarations to support their use in the marketplace.



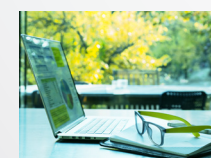
Promote the use of our products in repair and restoration to prevent the generation of waste from substrate/core structure replacement.



Use energy efficiently throughout our business processes. Measure and commit to reducing energy consumption and source its supply in line with the sustainability vision.



Eliminate waste and reuse, recycle or recover energy from waste that cannot be otherwise prevented. Waste will only be land-filled as a last resort.



Develop sustainable workplace environments, foster employee awareness to act in accordance to these values and promote social responsibility.



ARDEX PRODUCT CATEGORIES

ARDEX offers a complete product offering, enabling customers to choose the right product based on their specific needs.

From entry level products and workhorses through to benchmark premium products, solutions for all price and performance requirements are available.

TILING

Tile Adhesives
Natural Stone Adhesives
Ready Mixed Adhesives
Flexible Adhesives
Rapid Technology
Rapid Setting Adhesives
Decoupling Systems
Crack Isolation Systems

FLOORING

Self-Levelling Compounds
Bulkfill Compound
Wear Surfaces
External Levelling
Engineered Screeds
Vinyl Adhesives
Repair Mortars
Patching Mortars

WATERPROOFING

Liquid Applied Membranes
WeldTec Sheet Membrane

- Undertile
- Exposed
- Green Roofs & Planter Boxes
- Belowgrade and Tanking

Potective Facade Coatings
Trafficable Membranes & Coatings
Butynol Membranes
Torch-applied Membranes

GROUTS & SILICONES

Epoxy Grouts
Commercial Grouts
Cement Based Grouts
Silicone Sealants

GENERAL CONSTRUCTION

Concrete Repair Mortars
Renders
Construction Grouts
Rapid Setting Repair Mortars
Structural Crack Repair
Construction Sealants



SOLUTIONS FROM UNDER-SLAB TO ROOFTOPS

GREEN ROOF & PLANTER
BOX WATERPROOFING
SYSTEMS

RENDERS AND
PATCHING COMPOUNDS

EXPOSED ROOFTOP
WATERPROOFING
SYSTEMS

EXTERNAL WATERPROOFING
SYSTEMS FOR BALCONIES
AND TERRACES

FACADE COATINGS

EXTERNAL TILING
SYSTEMS

EXTERNAL SCREEDS
& FLOOR LEVELLING
SYSTEMS

TRAINING
CENTRE

GROUTS AND SILICONES

BELOW GRADE
WATERPROOFING
SYSTEMS FOR UNDER-
SLAB AND LIFT PITS

SOLUTIONS FROM LEARNING SPACES TO WET AREAS

ENGINEERED
SCREEDS

FLOOR LEVELLING
SYSTEMS

VINYL ADHESIVES

MOISTURE BARRIER
SYSTEMS

CEMENT BASED &
EPOXY GROUTS

SANITARY SILICONES

TILE ADHESIVES

SCREED AND
LEVELLING SYTEMS

UNDERTILE
WATERPROOFING
SYSTEMS

PROJECT SOLUTIONS

LITTLE LANE EARLY
LEARNING CENTRE,
MANLY, NSW

5,000m²

of ARDEX WPM 1000, ARDEX Root Repell, ARDEXWPM 1500, ARDEX K 301 and ARDEX K 120 installed.

EDUCATION



ARDEX was chosen because of our systems approach. A complete ARDEX waterproofing system was specified to not only provide a quick turnaround, but for reliability as well. For the outdoor learning and play area, and planter boxes, a system comprising of ARDEX WPM 1000 and ARDEX Root Repell waterproofing membranes was installed. Both waterproofing membrane systems are specially designed for this type of external environment. ARDEX WPM 1500 tanking membrane was installed in the below ground car park and lift pits.

GREATER SHEPPARTON
SECONDARY COLLEGE
SHEPPARTON, VIC

20,000m²

of ARDEX A 48, ARDEX K 900 BF, ARDEX K 120, ARDEX WPM 300, and ARDEX WPM 155 Rapid installed.

EDUCATION



SCEGGS - REDLANDS
SENIOR CAMPUS
DARLINHURST, NSW

3,500m²

of ARDEX Root Repell, ARDEX DRS 50 DC and ARDEX DRS 1 GT installed

EDUCATION



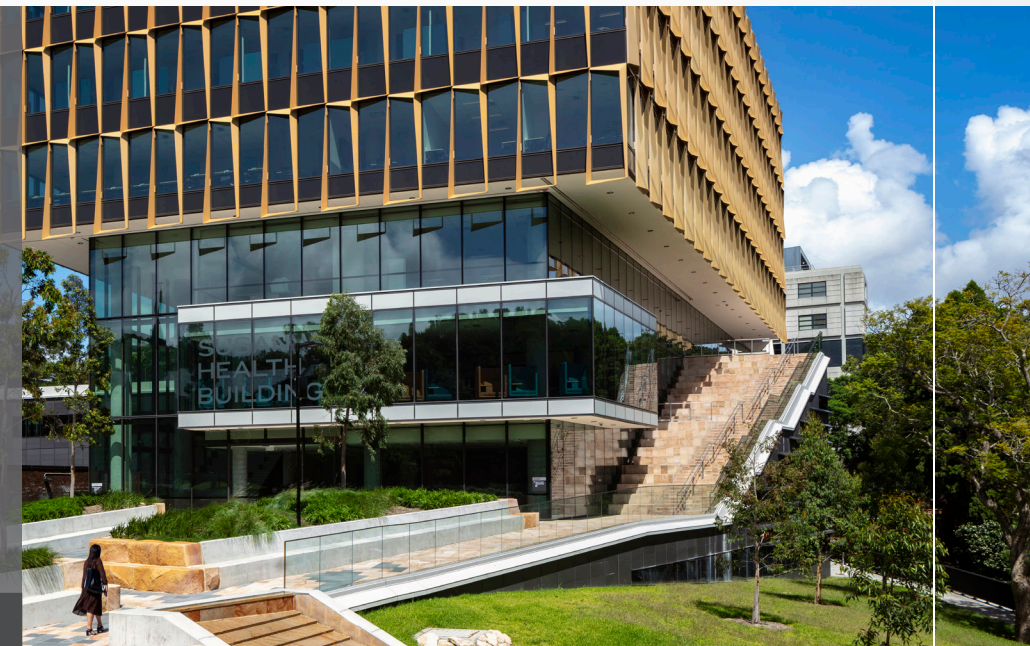
The multi-purpose outdoor areas required a membrane system with total membrane reliability as the construction was built over existing classrooms, the new carpark, and involved many integral waterproofing detailing requirements. ARDEX Weldtec Membrane and ARDEX Drainage System were specified for this 3,500m² project – a complete system ARDEX specification. ARDEX Root RepellTM waterproofing membrane was specified as the product offers heat-welded seams which guarantee a waterproof system with a consistent membrane thickness that allows for quick installation.

SUSAN WAKIL
HEALTH BUILDING,
SYDNEY UNIVERSITY, NSW

3,600m²

of ARDEX A38 Rapid Set Engineered Screed installed.

EDUCATION



Over 3,600m² of the ARDEX A38 Rapid Set Engineered Screed was specified for all outdoor spaces due to the products many key performance characteristics. These included ease of workability, guaranteed compressive strength, walkability timeframe, and suitability for external use. ARDEX were able to provide a high quality and trusted product to ensure the project remained on schedule and guaranteed the products performance characteristics met the project's environmental requirements.

SPECIFICATION & TRAINING

SPECIFICATION

Construction practices are diverse throughout Australia and each project is unique, requiring different products based on location, environment and application.

ARDEX manufactures a unique and diverse portfolio of specialty building products to meet the needs of local markets. Architects, designers and engineers who are working on a project can contact an ARDEX Specification Representative to assist them in selecting the appropriate ARDEX product based on the location of their project and create specifications.

ARDEXacademy
TRAINING EXCELLENCE

Our industry, like any other, requires on-going training to keep up with the changes in legislation/standards and materials (tiles, concrete, substrates etc). ARDEX offers training for both the applicator as well as design practitioners.

For members of the construction industry committed to providing a high level of workmanship, ARDEX can help stay up to date, and increase both knowledge and confidence when specifying.

CPD TRAINING

As a member of the Refuel CPD Provider Network ARDEX Australia are proud to offer online formal CPD training to you. Our courses are aimed to educate and aid architects, specifiers and designers on the topics of waterproofing, tiling and flooring systems.

These one hour sessions can be facilitated online or face to face and offer 1 formal CPD point for each topic.

The topics we have are;

- The 4 Key Components of Successful Waterproofing
- Sources of Moisture and Damp Slab Problems
- Floor Preparation For Resilient and Textile Floor Finishes
- Efflorescence & Sources of Grout Discolouration
- Understanding Grout

To view and register for any of our upcoming online sessions please visit <https://ardexaustralia.com/services/event-directory/ardex-cpd-training/>

WARRANTY

ARDEX WARRANTIES

The major point of difference between an ARDEX warranty and other warranties is the extent of the cover provided for the owner or builder.

Most competitor product warranties only cover the replacement of the defective product in the case of a claim. This cover is further reduced by a discounting structure based on the years of service prior to the claim. No cover is provided for the costs incurred in removing the defective product, re-installing the replacement product and the re-instatement of any coverings that existed over the top of the product. These costs can involve the owner or builder in a far greater expenditure than the discounted replacement cost of the defective product.

ARDEX PRODUCT & SYSTEM ARDEX WARRANTIES

Ardex warranty claims cover:

- a) the costs of repair to which the product is applied and damaged by removal of the defective product where such proves necessary.
- b) the cost of reinstatement or repair of the Product or System including material costs of equal or equivalent products.
- c) the costs of rectification of any material covering the product and removed to repair the product such as tiles, vinyl, etc. (Note: Replacement of floorcoverings limited to period of manufacturers warranty). Ardex warranty claims are NOT discounted by years of service of defective products of any damage to the surface or material.

TECHNICAL SUPPORT

TECHNICAL SUPPORT

ARDEX products are backed by a team of Technical Support Specialists and Sales Professionals dedicated to one goal – eliminating guesswork, improving onsite efficiencies and taking risk out of installations. ARDEX supports building professionals to complete successful projects by having:

- The largest field team of trained professionals
- Project specific installation recommendations
- Job start-up and walk-through support
- Trained contractor recommendation
- Extensive digital resources

CONTACT

Contact our Technical Services Department for help with anything out of the ordinary, If we don't already have the answer we will certainly investigate.

Technical Services Toll Free
1800 224 070 (Australia)

Technical Data is available on the ARDEX Australia Website www.ardexaustralia.com and the **ARDEX Australia Mobile App**.



ARDEX AUSTRALIA PTY LTD

7/20 Powers Road
Seven Hills NSW 2147

1300 788 780

technicalservices@ardexaustralia.com

www.ardexaustralia.com

TOLL FREE TECHNICAL SERVICES

1800 224 070 (Australia)

