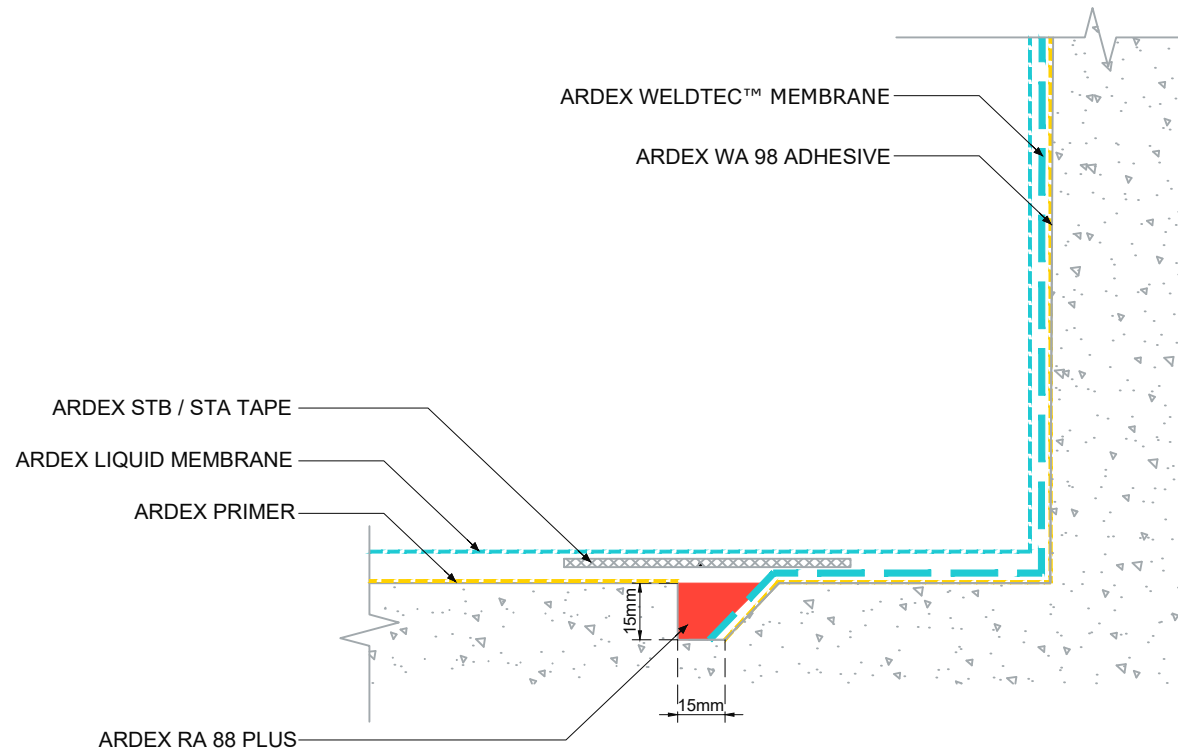


**HORIZONTAL REGLET
TERMINATION WITH LIQUID
MEMBRANE TRANSITION
(ARDEX STB TAPE) -
OPTION 1**

NOTES

Once the ARDEX WELDTEC™ MEMBRANE has been appropriately installed, the membrane termination (reglet) shall be filled with an ARDEX approved product such as ARDEX RA 88 PLUS, ARDEX RA 56, ARDEX WA 100, or ARDEX EG 800 F. Dependent on reglet size and length ARDEX suggest both products ARDEX RA 56 and ARDEX EG 800F to be bulk filled with ARDEX Aggregate.

ARDEX WELDTEC™ MEMBRANE excludes ARDEX WPM 715.



ARDEX AUSTRALIA
www.ardexaustralia.com

The technical details, recommendations & other information contained in this drawing is given in good faith & represents the best of our knowledge and experience at the time of design. It is your responsibility to ensure that our products are used used correctly in accordance with any applicable Australian Standard, our instructions & recommendations are only for the uses they are intended. We also reserve the right to update information without prior notice to reflect our ongoing research and development program. Country specific recommendations, depending on local standards, codes of practice, building regulations and industry guidelines may effect specific installation recommendations. The supply of our products and services are also subject to certain terms, warranties & exclusions which are available to you on request

FILE NAME	HORIZONTAL REGLET TERMINATION WITH LIQUID MEMBRANE TRANSITION (ARDEX STB TAPE) - OPTION 1
DRAWN	27/11/2024 by AD
CHECKED	ADAM MCGLONE
SIZE	A4

SCALE NTS
DRAWING D214