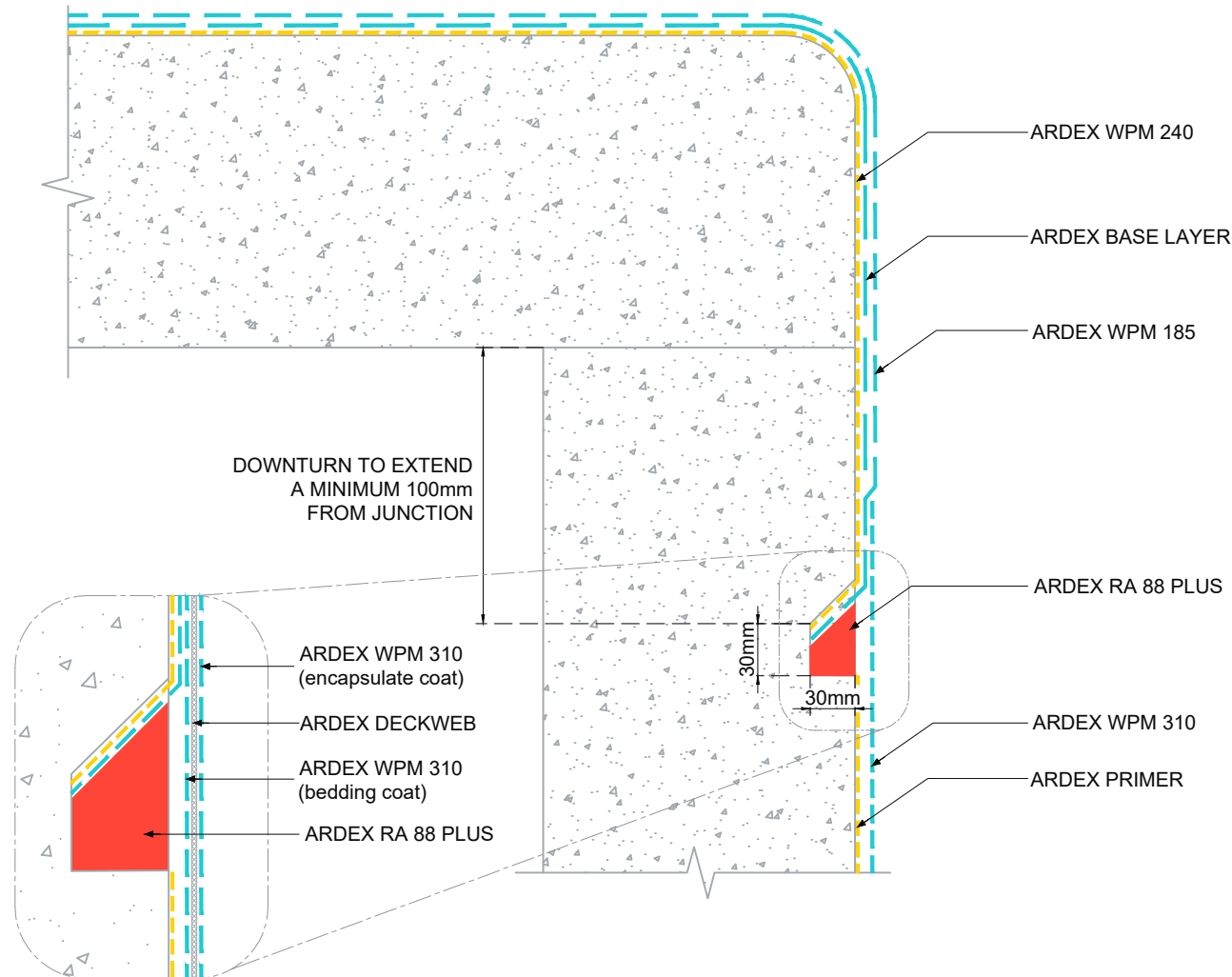


**VERTICAL DOWNTURN  
REGLET TERMINATION  
WITH ARDEX PROTECTIVE  
COATING**



**NOTES**

ARDEX WPM 185 must be used as capping layer when being terminated into reglet and sealed with ARDEX RA 88 PLUS.

**SUITABLE ARDEX PRIMER:**

- ARDEX WPM 270
- ARDEX WPM 300

Apply first coat of ARDEX WPM 310 onto ARDEX WPM 185 and below reglet to completely cover the reglet termination. Whilst first coat is wet, centrally embed ARDEX DECKWEB over the reglet termination and completely encapsulate with second coat of ARDEX WPM 310. Ensure no wrinkles or air bubbles are present within ARDEX DECKWEB during application.



The technical details, recommendations & other information contained in this drawing is given in good faith & represents the best of our knowledge and experience at the time of design. It is your responsibility to ensure that our products are used used correctly in accordance with any applicable Australian Standard, our instructions & recommendations are only for the uses they are intended. We also reserve the right to update information without prior notice to reflect our ongoing research and development program. Country specific recommendations, depending on local standards, codes of practice, building regulations and industry guidelines may effect specific installation recommendations. The supply of our products and services are also subject to certain terms, warranties & exclusions which are available to you on request

FILE NAME	VERTICAL DOWNTURN REGLET TERMINATION WITH ARDEX PROTECTIVE COATING
DRAWN	22/10/2024 by AD
CHECKED	ADAM MCGLONE
SIZE	A4

**ARDEX AUSTRALIA**  
www.ardexaustralia.com

SCALE NTS

DRAWING D200