

TYPICAL FLOOR TO WALL
JUNCTION DETAIL -
ARDEX WPM 8' SERIES

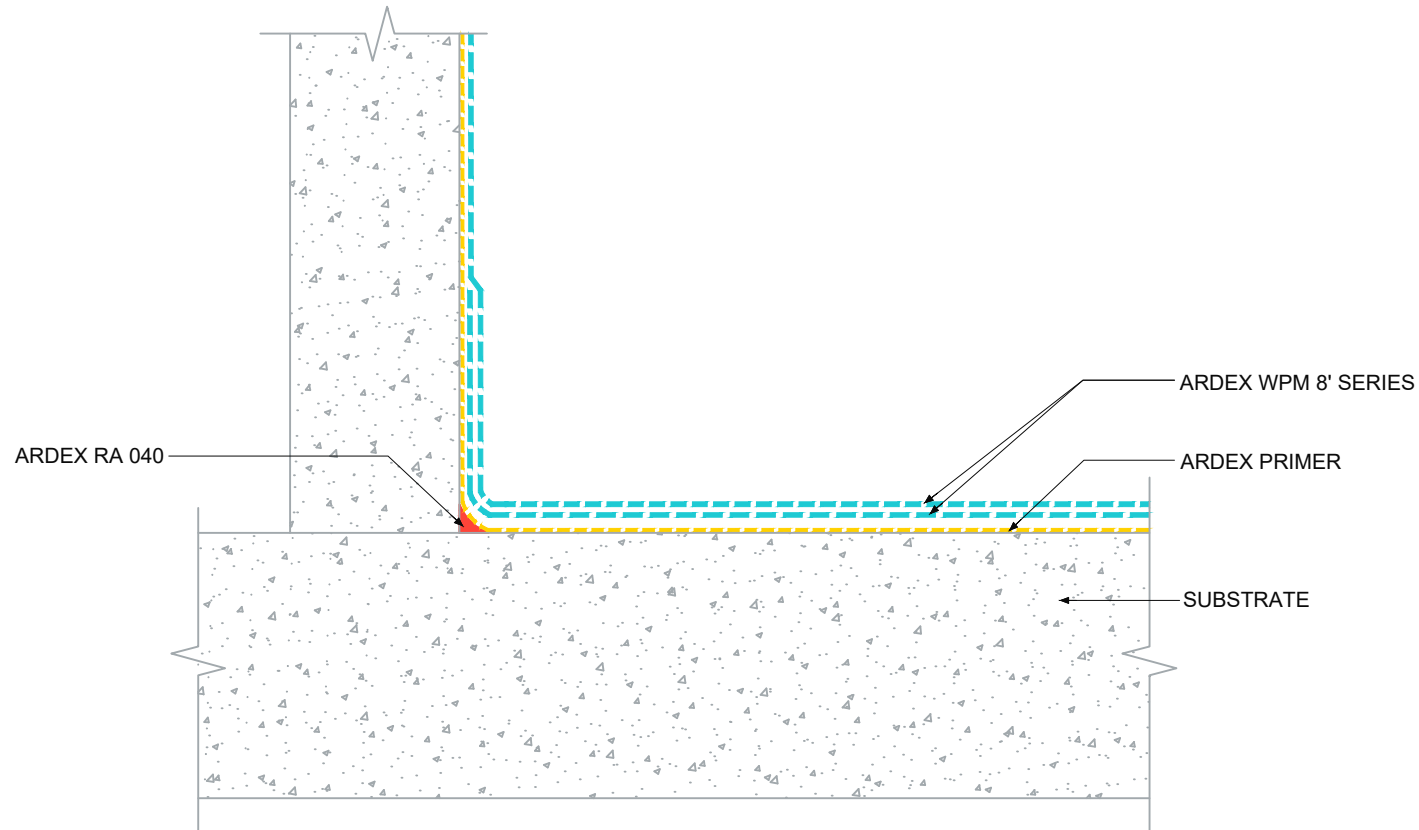
NOTES

Suitable ARDEX PRIMER include:

- ARDEX WPM 300
- ARDEX WPM 801

ARDEX WPM 8' SERIES:

- ARDEX WPM 812 / WPM 822
- ARDEX WPM 813 / WPM 823



The technical details, recommendations & other information contained in this drawing is given in good faith & represents the best of our knowledge and experience at the time of design. It is your responsibility to ensure that our products are used used correctly in accordance with any applicable Australian Standard, our instructions & recommendations are only for the uses they are intended. We also reserve the right to update information without prior notice to reflect our ongoing research and development program. Country specific recommendations, depending on local standards, codes of practice, building regulations and industry guidelines may effect specific installation recommendations. The supply of our products and services are also subject to certain terms, warranties & exclusions which are available to you on request

FILE NAME TYPICAL FLOOR TO WALL JUNCTION
DETAIL - ARDEX WPM 8' SERIES

DRAWN 24/09/2024 by AD

CHECKED ADAM MCGLONE

SIZE A4

ARDEX AUSTRALIA
www.ardexaustralia.com

SCALE NTS

DRAWING D171