

ARDEX WPM 8' SERIES - STEEL POST (FIXED) DETAIL

NOTES

Apply ARDEX RA 84 into all prepared pre-drilled holes prior to fixing placement.

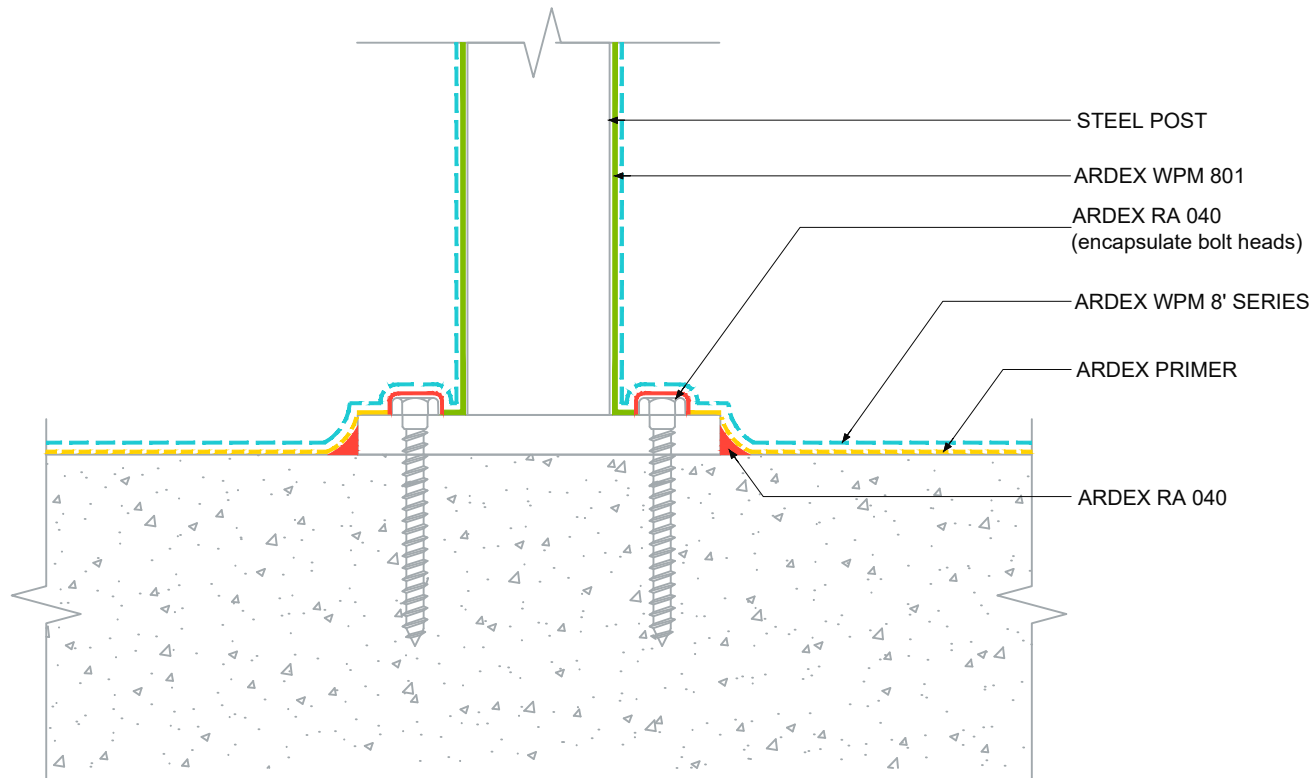
ARDEX PRIMER:

- ARDEX WPM 801 or
- ARDEX WPM 300

ARDEX WPM 8' SERIES SYSTEM includes:

- ARDEX WPM 812 / WPM 822
- ARDEX WPM 813 / WPM 823

Non-porous substrate preparation:
Mechanically abrade the surface of the metal or PVC surfaces and remove all loose debris. Solvent wipe these surfaces with ARDEX WA 98S and allow to flash off. Prime prepared surfaces with ARDEX WPM 801, and allow to dry between 1 hour – 3 hours. Please refer to the ARDEX WPM 801 product data sheet for further information



The technical details, recommendations & other information contained in this drawing is given in good faith & represents the best of our knowledge and experience at the time of design. It is your responsibility to ensure that our products are used correctly in accordance with any applicable Australian Standard, our instructions & recommendations are only for the uses they are intended. We also reserve the right to update information without prior notice to reflect our ongoing research and development program. Country specific recommendations, depending on local standards, codes of practice, building regulations and industry guidelines may effect specific installation recommendations. The supply of our products and services are also subject to certain terms, warranties & exclusions which are available to you on request

FILE NAME ARDEX WPM 8' SERIES - STEEL POST
(FIXED) DETAIL

DRAWN 24/09/2024 by AD

CHECKED ADAM MCGLONE

SIZE A4

ARDEX AUSTRALIA
www.ardexaustralia.com

SCALE NTS

DRAWING D170