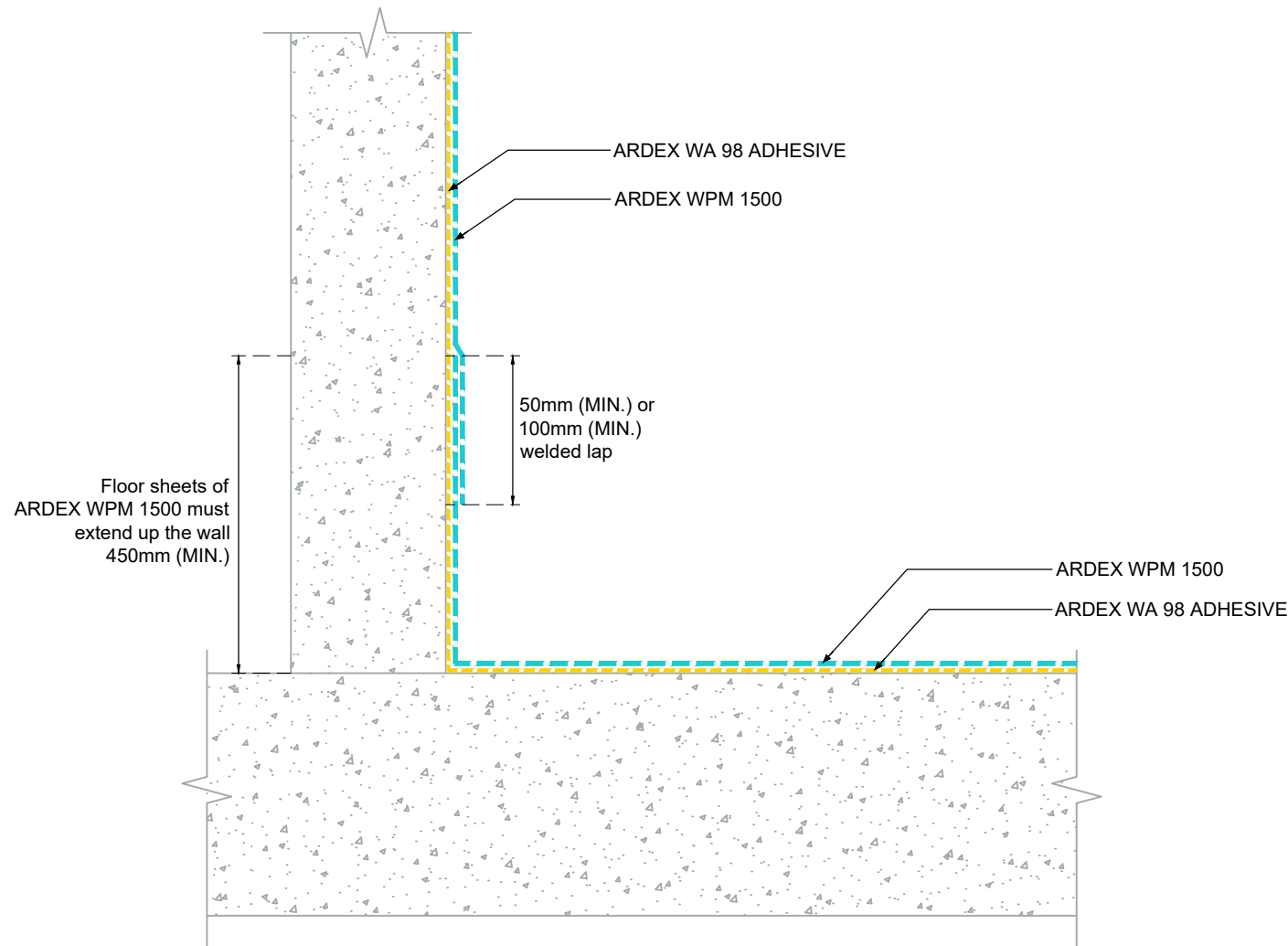


**TYPICAL VERTICAL
(UPTURN) WELD -
ARDEX WPM 1500**

NOTES

ARDEX WA 98 ADHESIVE for external use only.

Wall sheets of ARDEX WPM 1500 should overlap and be heat welded onto the upturned floor membrane by a minimum 50mm within bonded applications OR by a minimum 100mm for unbonded applications.



ARDEX AUSTRALIA
www.ardexaustralia.com

The technical details, recommendations & other information contained in this drawing is given in good faith & represents the best of our knowledge and experience at the time of design. It is your responsibility to ensure that our products are used used correctly in accordance with any applicable Australian Standard, our instructions & recommendations are only for the uses they are intended. We also reserve the right to update information without prior notice to reflect our ongoing research and development program. Country specific recommendations, depending on local standards, codes of practice, building regulations and industry guidelines may effect specific installation recommendations. The supply of our products and services are also subject to certain terms, warranties & exclusions which are available to you on request

FILE NAME TYPICAL VERTICAL (UPTURN) WELD - ARDEX WPM 1500

DRAWN 27/08/2024 by AD

CHECKED ADAM MCGLONE

SIZE A4

SCALE NTS

DRAWING D142