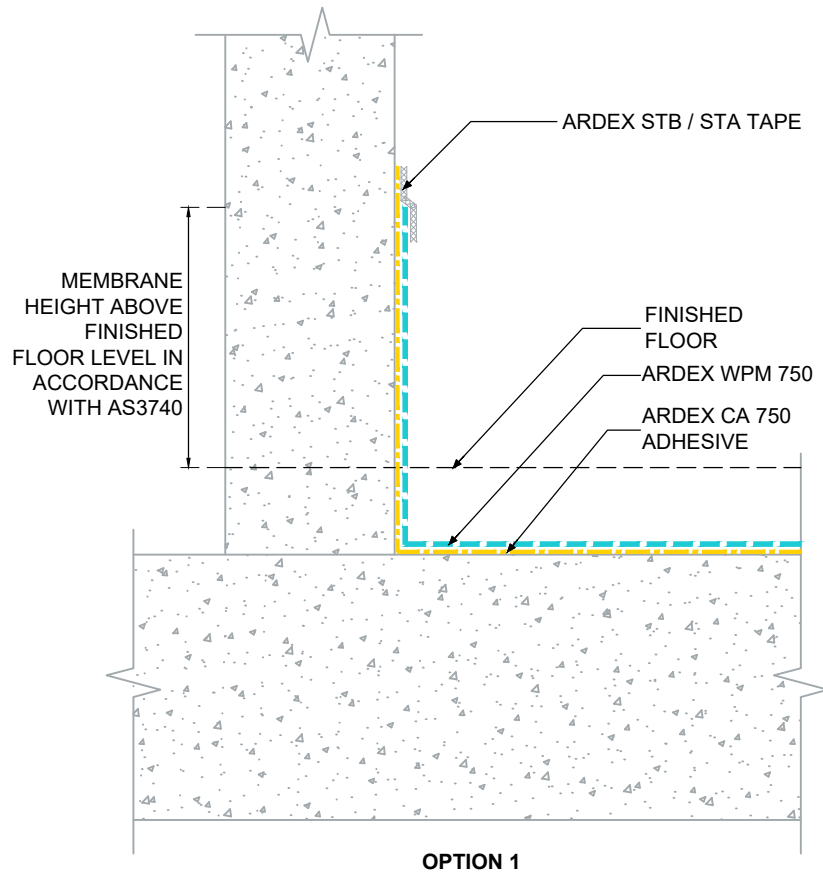
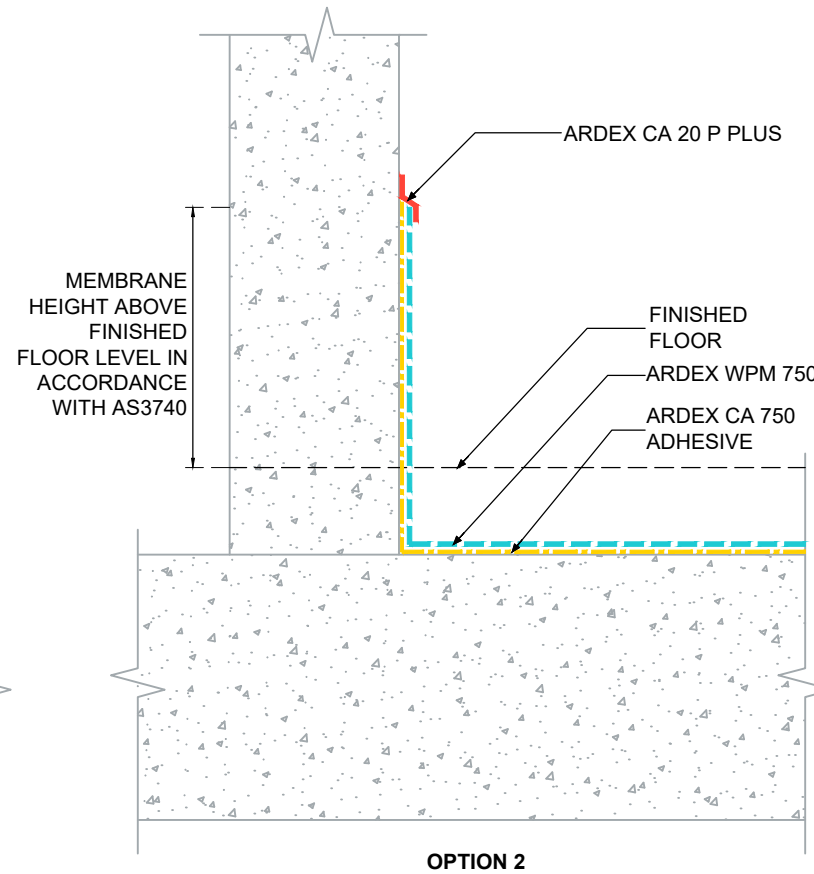


TYPICAL INTERNAL ARDEX WPM 750 TERMINATION (NON-HIGH RISK AREA)



OPTION 1



OPTION 2

NOTES

This membrane termination method not to be used within shower/bath (high risk) areas. Wall sheets of ARDEX WPM 750 within shower/bath (high risk) areas must overlap the 150mm floor upturn and be heat welded by a minimum 40mm, and finish 1800mm above finished floor heights or to a minimum height of 50mm above the shower rose.

The top surface fleece on the ARDEX WPM 750 must be carefully removed prior to direct application of ARDEX CA 20 P PLUS.

ARDEX CA 20 P PLUS must be tooled (smeared) along top edge of membrane to form contact with both membrane and prepared substrate.



ARDEX AUSTRALIA
www.ardexaustralia.com

The technical details, recommendations & other information contained in this drawing is given in good faith & represents the best of our knowledge and experience at the time of design. It is your responsibility to ensure that our products are used correctly in accordance with any applicable Australian Standard, our instructions & recommendations are only for the uses they are intended. We also reserve the right to update information without prior notice to reflect our ongoing research and development program. Country specific recommendations, depending on local standards, codes of practice, building regulations and industry guidelines may effect specific installation recommendations. The supply of our products and services are also subject to certain terms, warranties & exclusions which are available to you on request

FILE NAME	TYPICAL INTERNAL ARDEX WPM 750 TERMINATION (NON-HIGH RISK AREA)
DRAWN	27/08/2024 by AD
CHECKED	ADAM MCGLONE
SIZE	A4

SCALE	NTS
DRAWING	D132