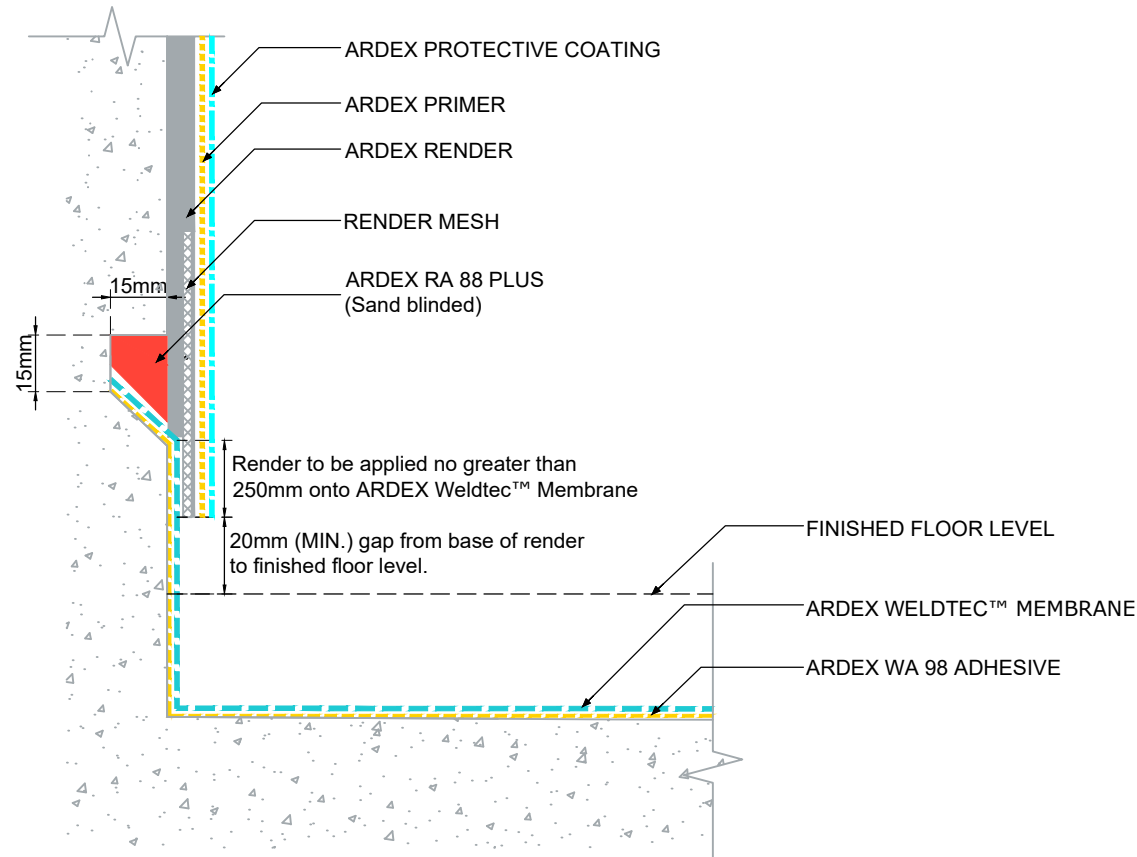


RENDER APPLICATION ONTO ARDEX WELDTEC™ MEMBRANE



NOTES

Render application:

1. Apply scratch coat of render onto membrane and prepared substrate.
2. Whilst render (scratch coat) is still wet centrally embed renders mesh along top edge of upturned membrane
3. Apply another scratch coat of render to fully encapsulate renders mesh.
4. Apply two coats of render as per normal once scratch coat has dried (set).

All passes of render must have ARDEX WR Primer used (applicable with ARDEX WR 120 FR only - not required when using ARDEX WR 80 FR).

ARDEX RENDER:

- ARDEX WR 80 FR
- ARDEX WR 120 FR

ARDEX PROTECTIVE COATING:

- ARDEX WPM 310
- ARDEX WPM 330

ARDEX WELDTEC™ MEMBRANE excluding ARDEX WPM 715.



ARDEX AUSTRALIA
www.ardexaustralia.com

The technical details, recommendations & other information contained in this drawing is given in good faith & represents the best of our knowledge and experience at the time of design. It is your responsibility to ensure that our products are used correctly in accordance with any applicable Australian Standard, our instructions & recommendations are only for the uses they are intended. We also reserve the right to update information without prior notice to reflect our ongoing research and development program. Country specific recommendations, depending on local standards, codes of practice, building regulations and industry guidelines may effect specific installation recommendations. The supply of our products and services are also subject to certain terms, warranties & exclusions which are available to you on request

FILE NAME RENDER APPLICATION ONTO ARDEX WELDTEC™ MEMBRANE

DRAWN 27/08/2024 by AD

CHECKED ADAM MCGLONE

SIZE A4

SCALE NTS

DRAWING D131