

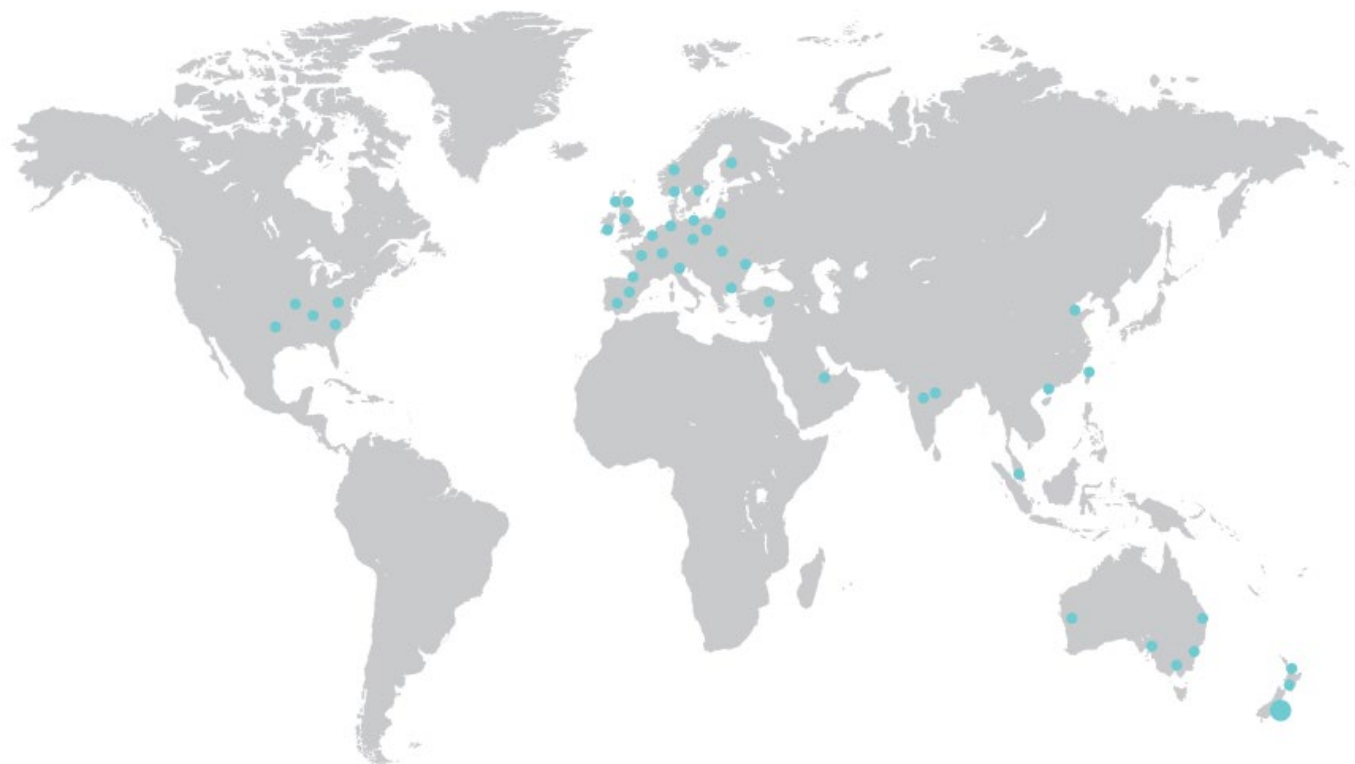


**ARDEX GENERAL
CONSTRUCTION**

ARDEX GROUP

Strong internal growth and carefully considered acquisitions in foreign markets put the ARDEX Group on the map with 55 subsidiaries and 3,450 employees in over 100 countries on all continents

Founded in 1949, ARDEX has been strong for over 70 years.





AKL EXPANSION



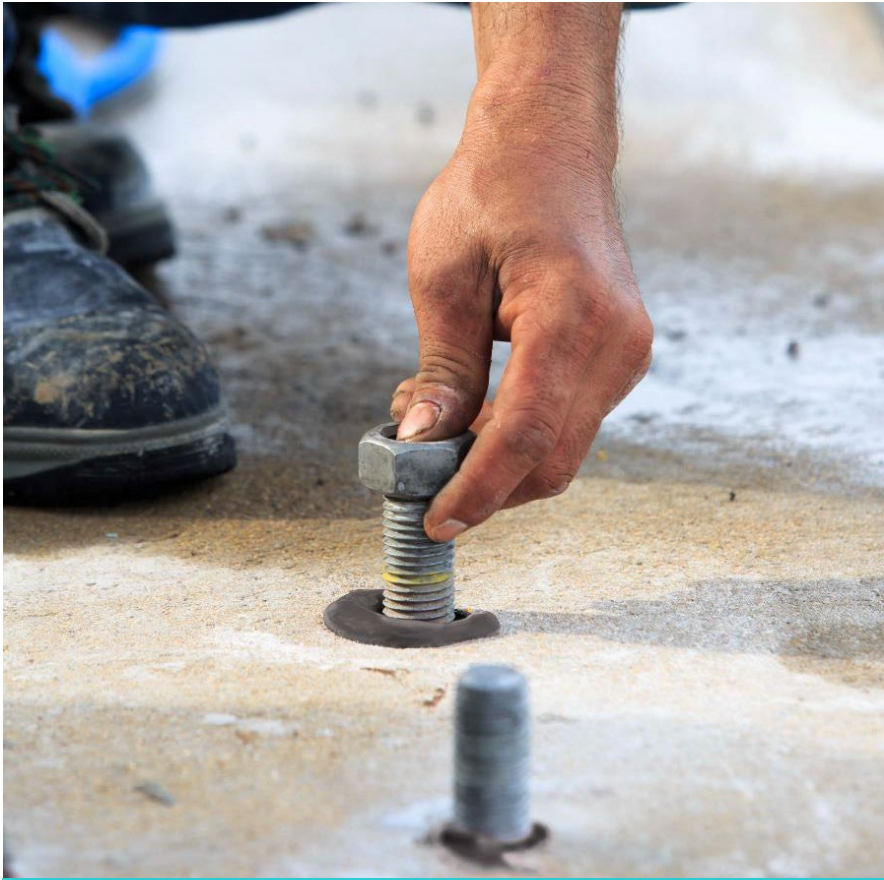
ARDEX RA 54

RAPID-CURE POLYUREA JOINT SEALANT



USES:

- ✓ Industrial floor applications with heavy duty vehicle traffic
- ✓ Filling interior control joints or new construction joints
- ✓ Projects requiring fast turnaround (90 Mins.)
- ✓ Internal and external applications (where minimal movement 10 – 12%)



ARDEX RA 84

FAST CURE ACRYLIC ADHESIVE



USES:

- ✓ Anchoring & dowelling applications in uncracked concrete
- ✓ Suitable for use on damp substrates
- ✓ As a capping gel for ARDEX crack injection system
- ✓ Bonding agent for fresh or hardened concrete to hardened concrete



ARDEX RA 88

EPOXY REPAIR ADHESIVE



USES:

- ✓ Bonds to almost any material!
- ✓ Repairing holes, spalls, cracks
- ✓ Suitable in water-saturated environments
- ✓ As a capping gel with ARDEX Crack Injection Systems
- ✓ Vertical, horizontal, overhead applications
- ✓ Structural crack repair with Rhino Concrete Crack Lock



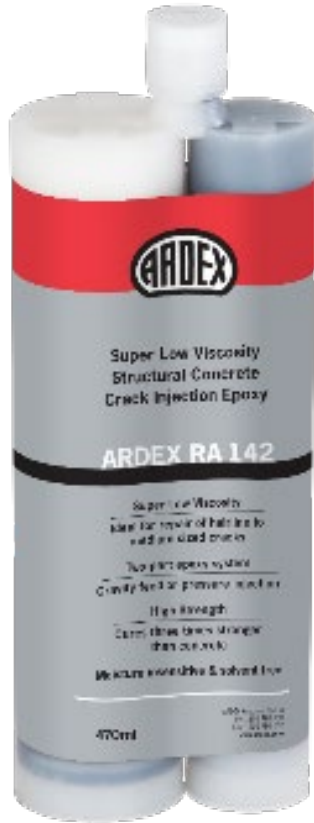
ARDEX RA 56

CRACK REPAIR RIGID HYBRID POLYURETHANE ADHESIVE

USES:



- ✓ Heavy duty floor repair
- ✓ Ideal for projects where minimal downtime is crucial
- ✓ Spall repair when mixed with aggregate
- ✓ Crack repair
- ✓ Horizontal applications
- ✓ For horizontal crack and spall repair
- ✓ Ultra low viscosity 60CPS penetrates deep into cracks
- ✓ Trafficable in 60 minutes
- ✓ Suitable for heavy-duty vehicle traffic
- ✓ Self-levelling



ARDEX RA 142

STRUCTURAL CONCRETE CRACK INJECTION EPOXY

USES:

- ✓ Ideal for pressure injection of structural hairline cracks
- ✓ Super low viscosity – for cracks down to 0.05mm
- ✓ Viscosity 190cps. (Centipoise)
- ✓ Ready to apply – no mixing required
- ✓ Suitable for gravity feed horizontal crack repair
- ✓ Epoxy resin binder for epoxy mortar patching
- ✓ Solvent free
- ✓ Moisture insensitive



ARDEX RA 144

STRUCTURAL CONCRETE CRACK INJECTION EPOXY

USES:

- ✓ Low viscosity – 500CPS
- ✓ (3mm – 6mm)
- ✓ Horizontal gravity-feed repair
- ✓ Suitable for pressure injection crack repair
- ✓ Ready to apply – no mixing required
- ✓ Epoxy resin binder for epoxy mortar patching
- ✓ Solvent free
- ✓ Moisture insensitive



ARDEX RA 146

BLINDSIDE STRUCTURAL CONCRETE CRACK INJECTION EPOXY

USES:

- ✓ Viscosity 4500cps
- ✓ Thixotropic gel with pressure injection – gel stops flowing when no pressure is being applied
- ✓ Ideal for blindsided crack repairs, where one side of crack cannot be capped
- ✓ Ready to apply – no mixing required
- ✓ Epoxy resin binder for epoxy mortar patching
- ✓ Solvent free



ARDEX T PORTS

FOR CRACK INJECTION SYSTEM

LEAK CONTROL VALVE:

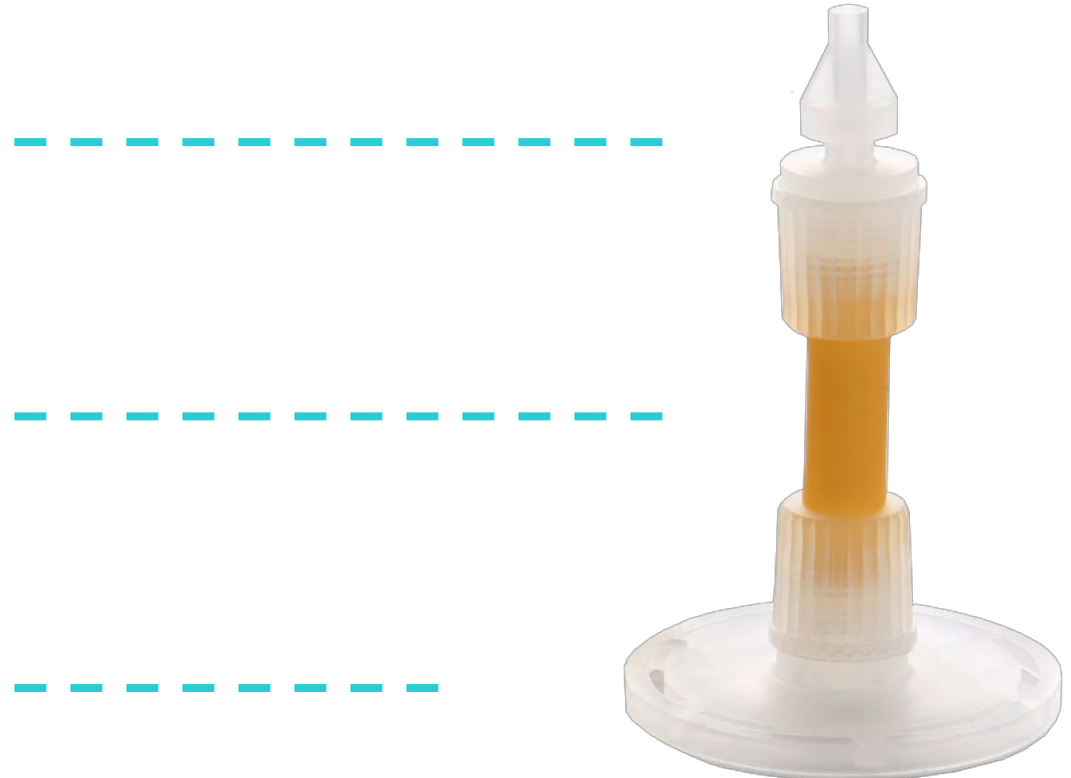
Designed to keep resin in – but keeps water and air out

STORAGE POD:

Continuously delivers constant injection pressure of 45-60 PSI after initial resin fill

MOUNTING BASE WITH GUIDE CIRCLE:

Continuously delivers constant injection pressure of 45-60 PSI after initial resin fill



RHINO CRACK LOCK CRACK BRIDGING STITCH



- ✓ Carbon fibre material
- ✓ Non-corrosive
- ✓ Prevents further cracking in concrete
- ✓ Increases seismic strength in repairs
- ✓ Suitable for horizontal or vertical applications
- ✓ For use with ARDEX crack injection epoxies
- ✓ Tensile strength: 1241 MPa

ACCESSORIES

FOR ARDEX CRACK REPAIR PRODUCTS



**DUAL CARTRIDGE
CAULKING GUN**



**NOZZLE FOR
ARDEX RA 54,
RA 84, RA 88
3 PACK**



**NOZZLE FOR
ARDEX RA 56
3 PACK**



**NOZZLE FOR
ARDEX RA 142,
RA 144, RA 146
3 PACK**



ARDEX
BR 340



ARDEX
BR 460 Flow



ARDEX
BR 345

EN 1504

PRODUCTS AND SYSTEMS FOR THE PROTECTION AND REPAIR OF CONCRETE STRUCTURES

REPAIR MORTARS & CONCRETES ARE CATEGORIZED INTO FOUR CLASSES

SUITABLE FOR:

R1

- ✓ Non-structural work
- ✓ Water-stopping mortar

R2

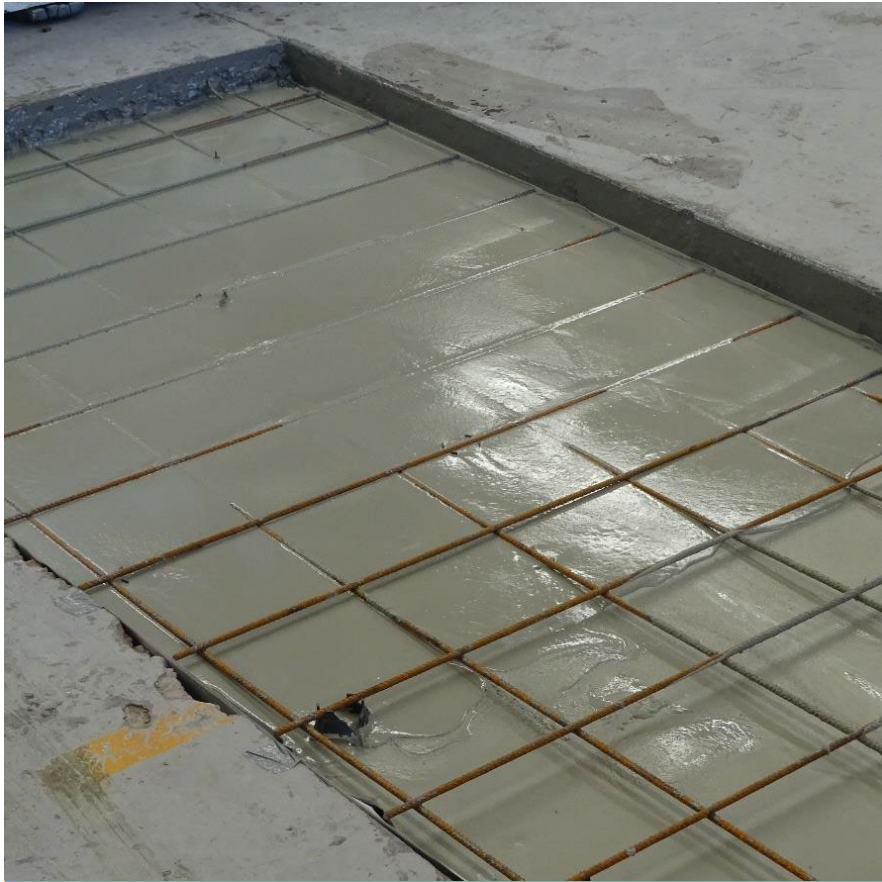
- ✓ Non-structural work
- ✓ Filling blow holes
- ✓ Reinstatement & rebuilding (non-structural)

R3

- ✓ Structural work
- ✓ Re-profiling
- ✓ Protection

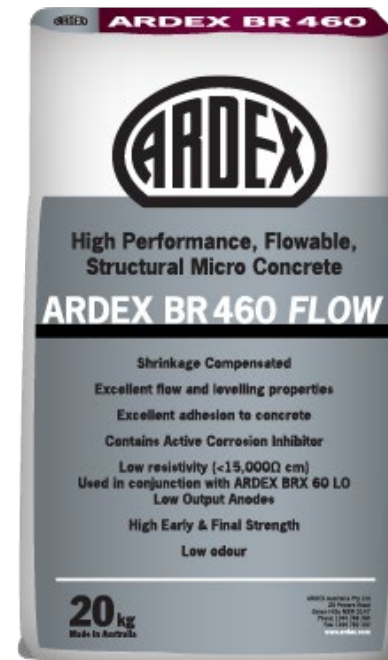
R4

- ✓ Structural work
- ✓ Large volume reinforcement
- ✓ Complex architectural details



ARDEX BR 460 FLOW

STRUCTURAL MICRO CONCRETE

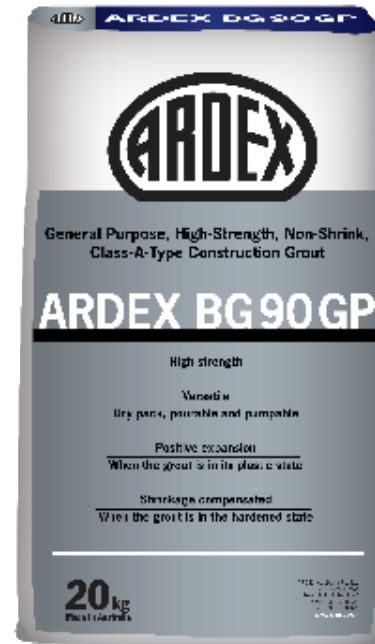


- ✓ Excellent flow and levelling properties
- ✓ Shrinkage compensated
- ✓ Meets or exceeds EN 1504 R4
- ✓ Final set in 9 hours
- ✓ 20mm to 100mm
- ✓ 70 MPA Heavy Duty Traffic



ARDEX BG 90 GP

CLASS A CONSTRUCTION GROUT



- ✓ Void filling & dry packing grouting jobs
- ✓ Applications from 12-100mm
- ✓ Base plates, machine plates, equipment support
- ✓ Precast panel connections – Column bases

COMPRESSIVE STRENGTH:

1 DAY	35MPa
7 DAYS	60 MPa
28 DAYS	70 MPa



ARDEX BG 140 HP

CLASS C CONSTRUCTION GROUT



- ✓ Precision grouting applications
- ✓ Critical equipment base plates, machine bases, equipment support
- ✓ Precast panel connections
- ✓ Grouting applications where high performance is critical

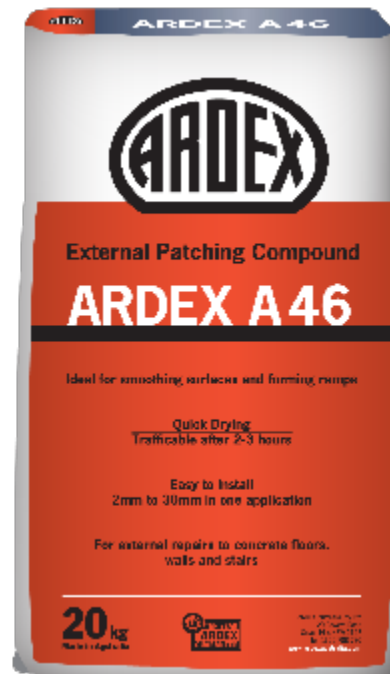
COMPRESSIVE STRENGTH:

1 DAY	30MPa
7 DAYS	75 MPa
28 DAYS	90 MPa



ARDEX A 46

PATCHING AND REPAIR MORTAR



- ✓ Trafficable after 2-4 hours –
- ✓ Easy to install
- ✓ Slump free - Rapid hardening and drying
- ✓ Repairing damaged concrete walls, floors, stairs
- ✓ Smoothing surfaces and forming ramps
- ✓ Internal or external applications
- ✓ 2mm – 30mm applications
- ✓ Floors with light-duty, soft-wheeled vehicle traffic



ARDEX K 900 BF

BULK FILL LEVELLING COMPOUND



- ✓ 3MM TO 90MM
- ✓ Ready for floorcoverings after 16 hours
- ✓ Pumpable using an automatic mixing pump
- ✓ Easy to install – engineered for controlled flow
- ✓ Low odour

COMPRESSIVE STRENGTH:

1 DAY	25MPa
7 DAYS	40 MPa
28 DAYS	45 MPa



ARDEX WR PRIME

POLYMER PRIMER AND ADDITIVE

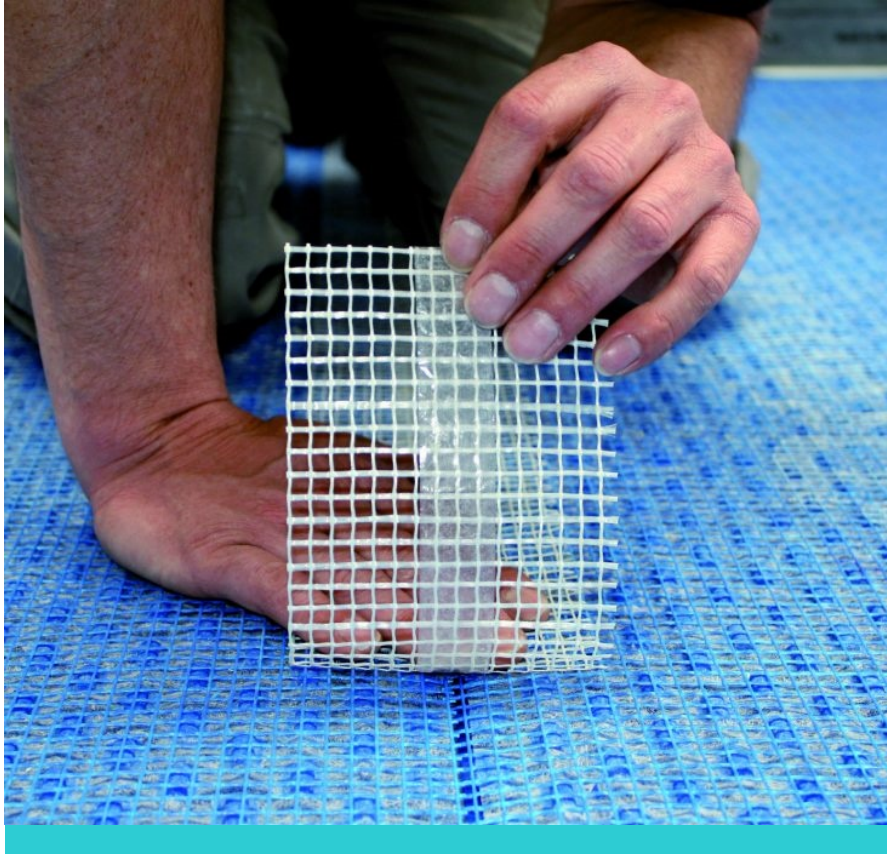
- ✓ Ideal as a performance-enhancing primer and additive for most cement-based products
- ✓ Improves adhesion to cementitious surfaces as a primer
- ✓ Improves bond strength and flexibility when used as an additive to cementitious products
- ✓ Increases working time when added to cementitious products



ARDEX WPM 300

EPOXY MOISTURE BARRIER

- ✓ Withstands positive and negative hydrostatic pressure
- ✓ Can be applied to damp surfaces
- ✓ Suitable for application to green concrete
- ✓ Prevents rising damp and efflorescence
- ✓ Suitable for horizontal or vertical applications
- ✓ Use as a moisture barrier or as a barrier seal coating
- ✓ Potable water approved



ARDEX UD 150

THIN LAYER UNDERTILE DRAINAGE MAT

- ✓ The answer for directly adhered external tiling systems
- ✓ Excellent drainage capabilities
- ✓ Allows fast and full drying of the tile and deck system
- ✓ Reduces the risk of efflorescence
- ✓ Meets NZBC E2/AS1 requirements for a removable surface
- ✓ Isolates cracking and substrate movement from the tiled surface
- ✓ High compressive strength and rigidity
- ✓ Provides insulation and impact and footfall sound



ARDEX DS 70

**IMPACT SOUND
REDUCTION AND
DECOUPLING
SYSTEM**



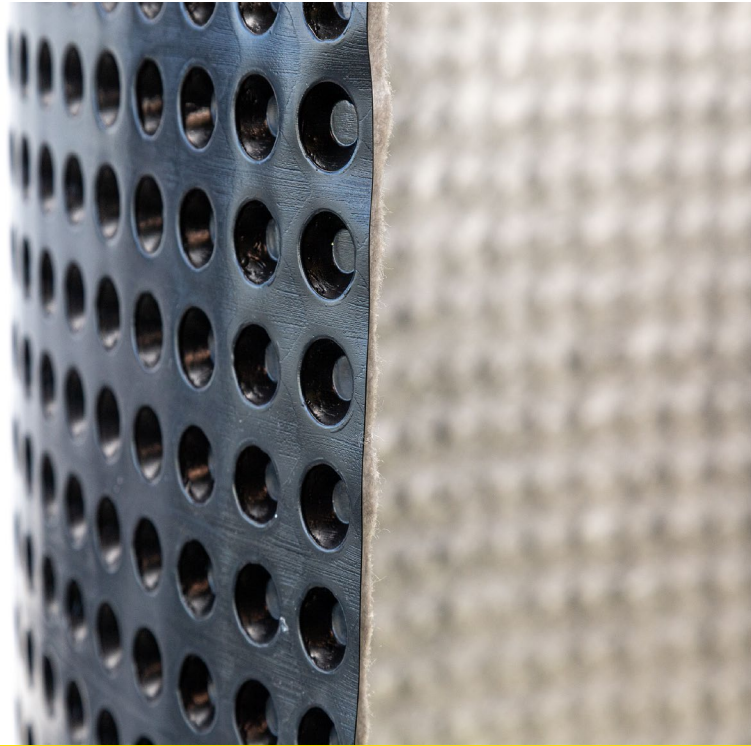


ARDEX DS 70

THE PERFECT SOUNDPROOFING OPTION FOR A VARIETY OF PROJECTS INCLUDING



- ✓ Apartment Buildings
- ✓ Hotels
- ✓ Multi-storey residential
- ✓ Offices
- ✓ Anywhere impact insulation is required



ARDEX WPM 3000X

SHELTERSEAL



- ✓ Self Adhesive SBS Membrane
- ✓ Radon and Methane Gas barrier
- ✓ Compatible with steel and metals
- ✓ BRANZ Appraised No. 462

TECHNICAL SERVICES



- ✓ Site training available
- ✓ Access to ARDEX Warranty System
- ✓ CAD Drawings / Specifications available



**STAY UP TO DATE WITH ARDEX PRODUCT UPDATES, NEWS
AND MORE BY SIGNING UP TO OUR NEWSLETTER AT**

WWW.ARDEX.CO.NZ



@ARDEXNZ



@ARDEXNEWZEALAND



THANK YOU