



TECHNICAL BULLETIN – TB182

TILING INSTALLATION ON UNIVERSAL SHOWER BASE TRAYS

JULY 2024

INTRODUCTION & SCOPE

This Technical Bulletin has been prepared to provide guidelines for installing tiles to prefabricated UNIVERSAL shower trays marketed and distributed by Universal Shower Base Pty Ltd.

CONDITIONS

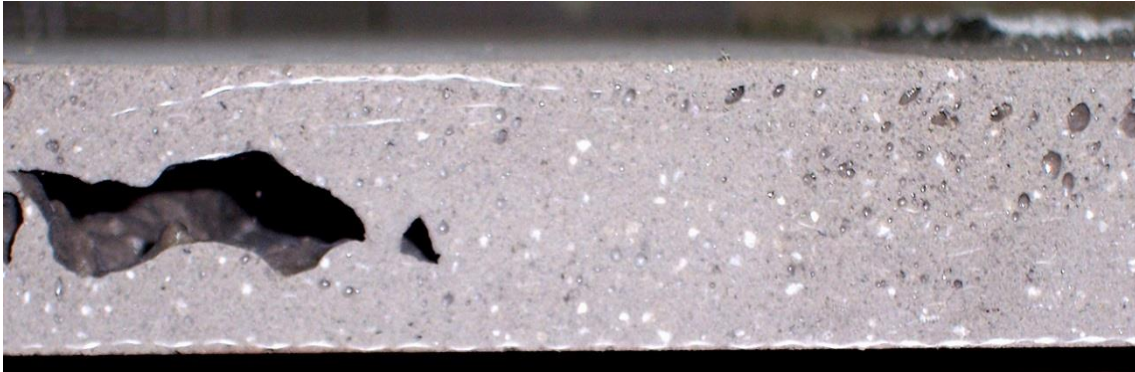
- The installation must conform to the requirements of AS 3958:2023.
- The installation must be carried out by qualified tradespersons.
- All products recommended in the system shall be used strictly per the manufacturers' instructions and have a shelf life within the outlined shelf life on the packaging.
- All products recommended in the system must be supplied to the site in unopened sealed containers and stored according to the manufacturer's instructions.
- Testing was carried out to ensure that the deflection of the Universal shower base when installed does not exceed the recommended 1/360 of span.
- Ardex warrants satisfactory adhesion of the tiles to the Universal shower base installed strictly according to the guidelines provided in this document.
- The Universal shower base shall be located and installed strictly per the manufacturer's instructions.

TYPES OF BASE

ARDEX examined two configurations of Universal Shower Base in 2013, and this bulletin covers the following two types.



Polymer-cement-fibreglass reinforced faces with a foamed urethane foam core.



Polymer–cement combination with fibre-glass mesh reinforcement

SURFACE PREPARATION

The Universal shower base surface must be clean and free of dirt, grease, oil, and other contaminants.

The Universal shower base must be located and securely fixed to the substrate per the recommended instructions provided by the manufacturer and free from excessive deflection (i.e., greater than 1/360th of the span in any direction).

Sanding is not strictly required for fresh and clean base surfaces. However, where there is contamination, all surfaces of the base to be tiled can be sanded using 40-grit sandpaper to roughen the surface and thoroughly cleaned free from dust using a damp sponge.

TILE APPLICATION

- 1) Prime the surfaces with one coat of any of the following.

Ardex WPM 300 mixed to the ratio of 1:1 Parts A to B

Ardex WPM368

Ardex P9 primer

Use a brush or a roller to get full coverage.

- 2) Fix tiles to Universal™ shower base using:

Ardex Optima

Ardex X77 + Ardex E90

Ardex Abaflex

Ardex X56

Ardex X52

tile adhesive using a 10x10x10mm notch trowel.



Apply the tile adhesive over WPM 300 whilst the primer is wet or tacky.

Check for 100% adhesive coverage on the back of the tile.

MEMBRANE APPLICATION

Where a waterproof membrane is required, Ardex WPM001, Ardex WPM155, or Ardex WPM002 are suitable for use with these shower bases. Priming shall be done with any of the primers listed above or Ardex WPM270 (it may not be suitable for all applications as it is a solvent-based material).

Careful attention must be paid to correctly detailing the shower tray-wall junctions.

GROUT APPLICATION

Suitable cement-based grouts would be Ardex FG8 or Ardex FSDD, mixed with the flexible additive Ardex Grout Booster diluted 80% booster with 20% water by volume.

Depending on the tile type, suitable sealants would be Ardex SE, Ardex ST silicones, or Ardex CA20P urethane-silane.

IMPORTANT

This Technical Bulletin provides guideline information only and is not intended to be interpreted as a general specification for the application/installation of the products described. Since each project potentially differs in exposure/condition, specific recommendations may vary from the information contained herein. For recommendations for specific applications/installations, contact your nearest Ardex Australia Office.

DISCLAIMER

The information presented in this Technical Bulletin is to the best of our knowledge true and accurate. No warranty is implied or given as to its completeness or accuracy in describing the performance or suitability of a product for a particular application. Users are asked to check that the literature in their possession is the latest issue.

REASON FOR REVISION-ISSUER

Content review, change of company slogan and address

DOCUMENT REVIEW REQUIRED

24 months or whenever third-party suppliers change their recommendations.

Australia: 1300 788 780

New Zealand: 643 384 3029

Web: www.ardexaustralia.com

email: technical.services@ardexaustralia.com

Address: 2 Buda Way, Kemps Creek NSW 2178